

bs-6670R**[Primary Antibody]****IGF2R/M6PR Rabbit pAb****Bioss**
ANTIBODIES

www.bioss.com.cn

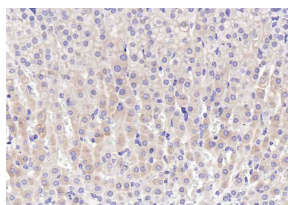
sales@bioss.com.cn

techsupport@bioss.com.cn

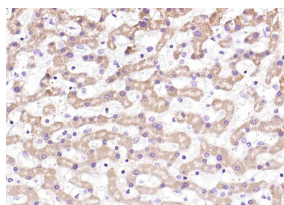
400-901-9800

— DATASHEET —

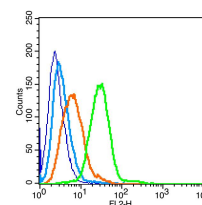
Host: Rabbit	Isotype: IgG	Applications: IHC-P (1:100-500)
Clonality: Polyclonal		IHC-F (1:100-500)
GeneID: 3482	SWISS: P11717	IF (1:100-500)
Target: IGF2R/M6PR		Flow-Cyt (5ug/Test)
Immunogen: KLH conjugated synthetic peptide derived from human IGF2R: 2201-2400/2491.		Reactivity: Human, Mouse (predicted: Rat, Rabbit, Pig, Cow, Chicken, Dog, Horse)
Purification: affinity purified by Protein A		Predicted MW.: 300 kDa
Concentration: 1mg/ml		Subcellular Location: Extracellular matrix ,Cell membrane ,Cytoplasm
Storage: 0.01M TBS (pH7.4) with 1% BSA, 0.02% Proclin300 and 50% Glycerol. Shipped at 4°C. Store at -20°C for one year. Avoid repeated freeze/thaw cycles.		
Background: Transport of phosphorylated lysosomal enzymes from the Golgi complex and the cell surface to lysosomes. Lysosomal enzymes bearing phosphomannosyl residues bind specifically to mannose-6-phosphate receptors in the Golgi apparatus and the resulting receptor-ligand complex is transported to an acidic prelysosomal compartment where the low pH mediates the dissociation of the complex. This receptor also binds IGF2. Acts as a positive regulator of T-cell coactivation, by binding DPP4.		

— VALIDATION IMAGES —

Paraformaldehyde-fixed, paraffin embedded (Mouse adrenal gland); Antigen retrieval by boiling in sodium citrate buffer (pH6.0) for 15min; Block endogenous peroxidase by 3% hydrogen peroxide for 20 minutes; Blocking buffer (normal goat serum) at 37°C for 30min; Antibody incubation with (IGF2R/M6PR) Polyclonal Antibody, Unconjugated (bs-6670R) at 1:200 overnight at 4°C, followed by operating according to SP Kit(Rabbit) (sp-0023) instructions and DAB staining.



Paraformaldehyde-fixed, paraffin embedded (human liver); Antigen retrieval by boiling in sodium citrate buffer (pH6.0) for 15min; Block endogenous peroxidase by 3% hydrogen peroxide for 20 minutes; Blocking buffer (normal goat serum) at 37°C for 30min; Antibody incubation with (IGF2R/M6PR) Polyclonal Antibody, Unconjugated (bs-6670R) at 1:200 overnight at 4°C, followed by operating according to SP Kit(Rabbit) (sp-0023) instructions and DAB staining.



Blank control(blue): Raji (fixed with 2% paraformaldehyde (10 min)). Primary Antibody:Rabbit Anti-IGF2R M6PR antibody(bs-6670R), Dilution: 5μg in 100 μL 1X PBS containing 0.5% BSA; Isotype Control Antibody: Rabbit IgG(orange), used under the same conditions; Secondary Antibody: Goat anti-rabbit IgG-PE(white blue), Dilution: 1:200 in 1 X PBS containing 0.5% BSA.

— SELECTED CITATIONS —

- **[IF=20.693]** Pei Dai. et al. Gimap5 promoted RSV degradation through interaction with M6PR. J MED VIROL. 2022 Dec;; IF, WB ;Human. 36484389
- **[IF=5.68]** Geng, Xiao-Rui, et al. "Insulin-like growth factor-2 enhances functions of Ag specific regulatory B cells." Journal of Biological Chemistry (2014). WB ;="Mouse". 24811165
- **[IF=2.38]** Yang, Shaobo, et al. "Insulin-Like Growth Factor-1 Modulates Polycomb Cbx8 Expression and Inhibits Colon Cancer Cell Apoptosis." Cell Biochemistry and Biophysics (2014): 1-5. WB ;="Human". 25398592

Important Note: This product as supplied is intended for research use only, not for use in human, therapeutic or diagnostic applications.