

## Recombinant human SIGLEC10 protein, C-hFc-Avi (HEK293), Biotin conjugated

Catalog Number: bs-47200P-Bio

Concentration: >0.5 mg/ml

AA Seq: 17-546/697

Predicted MW: 85.8

Detected MW: Due to glycosylation, the protein migrates to 95-110 kDa based on Tris-Bis PAGE result.

Tags: C-hFc-Avi

Activity: Not tested

Endotoxin: <1.0 EU/μg as determined by LAL

Purity: >95% as determined by Tris-Bis PAGE; >95% as determined by SEC-HPLC

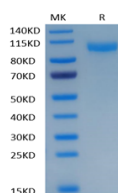
Purification: AC

Storage: Lyophilized from 0.22um filtered solution in PBS (pH7.4) with 5mM DTT. Normally 5% trehalose is added as protectant before Lyophilization.

Stored at -70°C or -20°C. Avoid repeated freeze/thaw cycles.

Background: SIGLECs are members of the immunoglobulin superfamily that are expressed on the cell surface. Most SIGLECs have 1 or more cytoplasmic immune receptor tyrosine-based inhibitory motifs, or ITIMs. SIGLECs are typically expressed on cells of the innate immune system, with the exception of the B-cell expressed SIGLEC6 (MIM 604405).[supplied by OMIM, Jul 2002]

### VALIDATION IMAGES



Human Siglec 10 Protein on Tris-Bis PAGE under reduced conditions. The purity is greater than 95%