

Recombinant human SIGLEC3 protein, C-hFc (HEK293)

Catalog Number: bs-47192P

Concentration: >0.5 mg/ml

AA Seq: 18-259/364

Predicted MW: 53.6

Detected MW: Due to glycosylation, the protein migrates to 68-80 kDa based on Tris-Bis PAGE result.

Tags: C-hFc

Activity: Not tested

Endotoxin: <1.0 EU/μg as determined by LAL

Purity: >95% as determined by Tris-Bis PAGE; >95% as determined by SEC-HPLC

Purification: AC

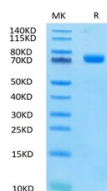
Form: Lyophilized

Storage: Lyophilized from 0.22μm filtered solution in PBS (pH7.4) with 5mM DTT. Normally 5% trehalose is added as protectant before Lyophilization.

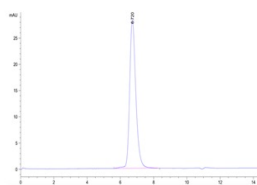
Stored at -70°C or -20°C. Avoid repeated freeze/thaw cycles.

Background: Enables protein phosphatase binding activity and sialic acid binding activity. Involved in several processes, including negative regulation of cytokine production; negative regulation of monocyte activation; and positive regulation of protein tyrosine phosphatase activity. Located in several cellular components, including Golgi apparatus; external side of plasma membrane; and peroxisome. [provided by Alliance of Genome Resources, Apr 2022]

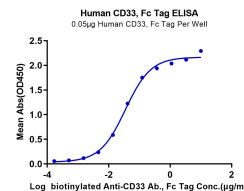
VALIDATION IMAGES



Recombinant siglec 3 Protein on Tris-Bis PAGE under reduced conditions. The purity is greater than 95%.



The purity of Siglec 3 Protein is greater than 95% as determined by SEC-HPLC.



Immobilized Human CD33, Fc at 0.5μg/ml(100μl/Well) on plate. Dose response curve for biotinylated Anti-CD33 Ab. with the EC50 of 35ng/ml determined by ELISA.