

bs-6711R**[Primary Antibody]****Netrin 4 Rabbit pAb****Bioss**
ANTIBODIES

www.bioss.com.cn

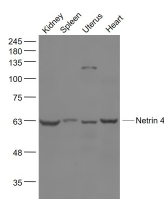
sales@bioss.com.cn

techsupport@bioss.com.cn

400-901-9800

— DATASHEET —

Host: Rabbit	Isotype: IgG	Applications: WB (1:500-2000)
Clonality: Polyclonal		Reactivity: Mouse (predicted: Human, Rat, Rabbit, Cow, Dog, Horse)
GeneID: 59277	SWISS: Q9HB63	Predicted MW.: 70 kDa
Target: Netrin 4		Subcellular Location: Secreted ,Extracellular
Immunogen: KLH conjugated synthetic peptide derived from human Netrin 4: 501-600/628.		Location: matrix ,Cell membrane
Purification: affinity purified by Protein A		
Concentration: 1mg/ml		
Storage: 0.01M TBS (pH7.4) with 1% BSA, 0.02% Proclin300 and 50% Glycerol. Shipped at 4°C. Store at -20°C for one year. Avoid repeated freeze/thaw cycles.		
Background: May play an important role in neural, kidney and vascular development. Promotes neurite elongation from olfactory bulb explants.		

— VALIDATION IMAGES —

Sample: Kidney (Mouse) Lysate at 40 ug Spleen (Mouse) Lysate at 40 ug Uterus (Mouse) Lysate at 40 ug Heart (Mouse) Lysate at 40 ug Primary: Anti- Netrin 4 (bs-6711R) at 1/1000 dilution Secondary: IRDye800CW Goat Anti-Rabbit IgG at 1/20000 dilution Predicted band size: 70 kD Observed band size: 63 kD