

bs-6665R**[Primary Antibody]****phospho-HRH1 (Ser398) Rabbit pAb****BioSS**
ANTIBODIES

www.bioss.com.cn

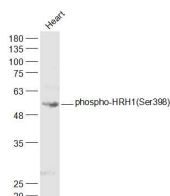
sales@bioss.com.cn

techsupport@bioss.com.cn

400-901-9800

— DATASHEET —

Host: Rabbit	Isotype: IgG	Applications: WB (1:500-2000) ELISA (1:5000-10000)
Clonality: Polyclonal		
GeneID: 3269	SWISS: P35367	Reactivity: Mouse, Rabbit (predicted: Human, Rat, Pig, Cow, Dog, GuineaPig, Horse)
Target: phospho-HRH1 (Ser398)		Predicted MW.: 54 kDa
Immunogen: KLH conjugated synthesised phosphopeptide derived from human HRH1 around the phosphorylation site of Ser398: SH(p-S)RQ.		Subcellular Location: Cell membrane
Purification: affinity purified by Protein A		
Concentration: 1mg/ml		
Storage: 0.01M TBS (pH7.4) with 1% BSA, 0.02% Proclin300 and 50% Glycerol. Shipped at 4°C. Store at -20°C for one year. Avoid repeated freeze/thaw cycles.		
Background: Histamine is a ubiquitous messenger molecule released from mast cells, enterochromaffin-like cells, and neurons. Its various actions are mediated by histamine receptors H1, H2, H3 and H4. This gene was thought to be intronless until recently. The protein encoded by this gene is an integral membrane protein and belongs to the G protein-coupled receptor superfamily. It mediates the contraction of smooth muscles, the increase in capillary permeability due to contraction of terminal venules, the release of catecholamine from adrenal medulla, and neurotransmission in the central nervous system. Multiple alternatively spliced variants, encoding the same protein, have been identified. [provided by RefSeq, Jul 2008].		

— VALIDATION IMAGES —

Sample: Heart (Mouse) Lysate at 40 ug Primary:
Anti-phospho-HRH1(Ser398) (bs-6665R) at
1/1000 dilution Secondary: IRDye800CW Goat
Anti-Rabbit IgG at 1/20000 dilution Predicted
band size: 54 kD Observed band size: 55 kD