

bs-3296R**[Primary Antibody]****phospho-PKMYT1 (Ser83) Rabbit pAb****BioSS**
ANTIBODIES

www.bioss.com.cn

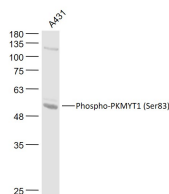
sales@bioss.com.cn

techsupport@bioss.com.cn

400-901-9800

— DATASHEET —

Host: Rabbit	Isotype: IgG	Applications: WB (1:500-2000)
Clonality: Polyclonal		Reactivity: Human (predicted: Mouse, Rat, Horse)
GeneID: 9088	SWISS: Q99640	
Target: PKMYT1 (Ser83)		Predicted MW.: 54 kDa
Immunogen: KLH conjugated synthesised phosphopeptide derived from human PKMYT1 around the phosphorylation site of Ser83: RV(p-S)FR.		Subcellular Location: Cytoplasm
Purification: affinity purified by Protein A		
Concentration: 1mg/ml		
Storage: 0.01M TBS (pH7.4) with 1% BSA, 0.02% Proclin300 and 50% Glycerol. Shipped at 4°C. Store at -20°C for one year. Avoid repeated freeze/thaw cycles.		
Background: This gene encodes a member of the serine/threonine protein kinase family. The encoded protein is a membrane-associated kinase that negatively regulates the G2/M transition of the cell cycle by phosphorylating and inactivating cyclin-dependent kinase 1. The activity of the encoded protein is regulated by polo-like kinase 1. Alternatively spliced transcript variants encoding multiple isoforms have been observed for this gene. [provided by RefSeq, May 2012]		

— VALIDATION IMAGES —

Sample: A431(Human) Cell Lysate at 30 ug
Primary: Anti-Phospho-PKMYT1 (Ser83)
(bs-3296R) at 1/1000 dilution Secondary:
IRDye800CW Goat Anti-Rabbit IgG at 1/20000
dilution Predicted band size: 54 kD Observed
band size: 54 kD