

Recombinant human Mesothelin, C-hFc (HEK293)

Catalog Number: bs-47156P

Concentration: >0.5 mg/ml

AA Seq: 296-580/630

Predicted MW: 59

Detected MW: Due to glycosylation, the protein migrates to 68-72 kDa based on Tris-Bis PAGE result.

Tags: C-hFc

Activity: Not tested

Endotoxin: <1.0 EU/μg as determined by LAL

Purity: >95% as determined by Tris-Bis PAGE; >95% as determined by SEC-HPLC

Purification: AC

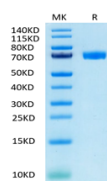
Form: Lyophilized

Storage: Lyophilized from 0.22um filtered solution in PBS (pH7.4) with 5mM DTT. Normally 5% trehalose is added as protectant before Lyophilization.

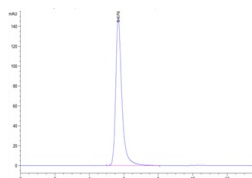
Stored at -70°C or -20°C. Avoid repeated freeze/thaw cycles.

Background: Mesothelin(MSLN) may play a role in cell adhesion and cell shape dynamics; human homolog highly expressed in renal cell carcinoma. malignant tumors, such as a skin lump, ovary cancer and the pancreas cancer...etc..Mainly used for the research of the malignant tumor.

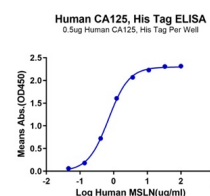
VALIDATION IMAGES



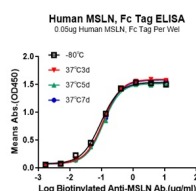
Human Mesothelin/MSLN Protein on Tris-Bis PAGE under reduced conditions. The purity is greater than 95%.



The purity of Human Mesothelin/MSLN Protein is greater than 95% as determined by SEC-HPLC.



Immobilized Human CA125, His Tag(Cat. MUC-HM416) at 5ug/ml(100ul/Well).Dose response curve for Human MSLN, Fc Tag with the EC50 of 0.7ug/ml determined by ELISA.



Immobilized Human MSLN,Fc Tag at 0.5ug/ml
(100ul/Well). Dose response curve for
Biotinylated Anti-Human MSLN Ab. with the
EC50 of 0.1/0.1/0.1/0.09ug/ml determined by
ELISA.