

## Recombinant Cyn. monkey Mesothelin / MSLN protein, C-His (HEK293)

Catalog Number: bs-47154P

Concentration: >0.5 mg/ml

AA Seq: 296-580/622

Predicted MW: 33

Detected MW: Due to glycosylation, the protein migrates to 35-50 kDa based on Tris-Bis PAGE result.

Tags: C-His

Activity: Not tested

Endotoxin: <1.0 EU/μg as determined by LAL

Purity: >95% as determined by Tris-Bis PAGE; >95% as determined by SEC-HPLC

Purification: AC

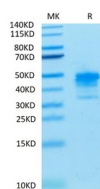
Form: Lyophilized

Storage: Lyophilized from 0.22um filtered solution in PBS (pH7.4) with 5mM DTT. Normally 5% trehalose is added as protectant before Lyophilization.

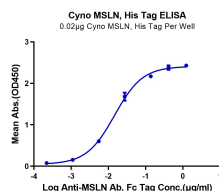
Stored at -70°C or -20°C. Avoid repeated freeze/thaw cycles.

Background: Mesothelin(MSLN) may play a role in cell adhesion and cell shape dynamics; human homolog highly expressed in renal cell carcinoma. malignant tumors, such as a skin lump, ovary cancer and the pancreas cancer...etc..Mainly used for the research of the malignant tumor.

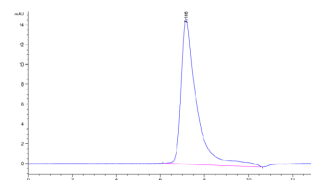
### VALIDATION IMAGES



Cynomolgus Mesothelin / MSLN Protein on Tris-Bis PAGE under reduced condition. The purity is greater than 95%.



Immobilized Cyno MSLN at 0.2μg/ml (100μl/Well). Dose response curve for Anti-MSLN Ab. with the EC50 of 14.6ng/ml determined by ELISA.



The purity of Cynomolgus Mesothelin / MSLN Protein is greater than 95% as determined by SEC-HPLC.