

Recombinant human LIF R protein, C-hFc (HEK293)

Catalog Number: bs-47148P

Concentration: >0.5 mg/ml

AA Seq: 45-833/1097

Predicted MW: 87

Detected MW: Due to glycosylation, the protein migrates to 120-140 kDa based on Tris-Bis PAGE result.

Tags: C-hFc

Activity: Not tested

Endotoxin: <1.0 EU/μg as determined by LAL

Purity: >95% as determined by Tris-Bis PAGE; >95% as determined by SEC-HPLC

Purification: AC

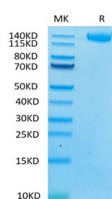
Form: Lyophilized

Storage: Lyophilized from 0.22um filtered solution in PBS (pH7.4) with 5mM DTT. Normally 5% trehalose is added as protectant before Lyophilization.

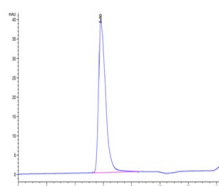
Stored at -70°C or -20°C. Avoid repeated freeze/thaw cycles.

Background: This gene encodes a protein that belongs to the type I cytokine receptor family. This protein combines with a high-affinity converter subunit, gp130, to form a receptor complex that mediates the action of the leukemia inhibitory factor, a polyfunctional cytokine that is involved in cellular differentiation, proliferation and survival in the adult and the embryo. Mutations in this gene cause Schwartz-Jampel syndrome type 2, a disease belonging to the group of the bent-bone dysplasias. A translocation that involves the promoter of this gene, t(5;8)(p13;q12) with the pleiomorphic adenoma gene 1, is associated with salivary gland pleiomorphic adenoma, a common type of benign epithelial tumor of the salivary gland. Multiple splice variants encoding the same protein have been found for this gene.

VALIDATION IMAGES



Human LIF R on Tris-Bis PAGE under reduced condition. The purity is greater than 95%.



The purity of Human LIF R is greater than 95% as determined by SEC-HPLC.