

Recombinant human LIF protein (HEK293)

Catalog Number: bs-47147P

Concentration: >0.5 mg/ml

AA Seq: 23-202/202

Predicted MW: 20

Detected MW: Due to glycosylation, the protein migrates to 40-55 kDa based on Tris-Bis PAGE result.

Tags: Tag free

Activity: Not tested

Endotoxin: <1.0 EU/μg as determined by LAL

Purity: >95% as determined by Tris-Bis PAGE; >95% as determined by SEC-HPLC

Purification: AC

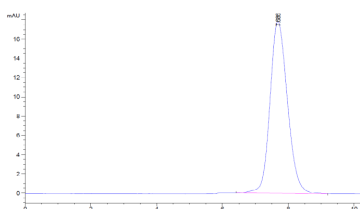
Form: Lyophilized

Storage: Lyophilized from 0.22um filtered solution in PBS (pH7.4) with 5mM DTT. Normally 5% trehalose is added as protectant before Lyophilization.

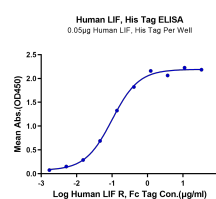
Stored at -70°C or -20°C. Avoid repeated freeze/thaw cycles.

Background: The leukemia inhibitory factor- LIF is a kind of cell factor that has various living creature functions. It has the leukemia cell of inducement to divide, regulating the growth metabolism of the bone organization, maintaining the basic characteristic of the Embryonic stem cells and promoting the mankind build the blood stem cell to divide to propagate, promote the cholinergic neuron to divide, obstruct the fat cell to synthesize, stimulate the muscle cell growth, regulate the liver cell to expect to respond the egg white to synthesize etc. in the acute the biology activity etc. function.

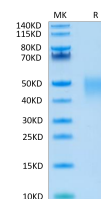
VALIDATION IMAGES



The purity of Human LIF Protein is greater than 95% as determined by SEC-HPLC.



Immobilized Human LIF at 0.05μg/ml (100μl/Well). Dose response curve for Human LIF R, Fc Tag with the EC50 of 99.3ng/ml determined by ELISA.



Human LIF Protein on Tris-Bis PAGE under reduced condition. The purity is greater than 95%.