

Recombinant human Integrin Alpha 5 Beta 1 (ITGA5 & ITGB1) protein, C-His-Avi (HEK293)

Catalog Number: bs-47137P

Concentration: >0.5 mg/ml

AA Seq: 42-995/1049

Predicted MW: 111.8(ITGA5)&83.2 (ITGB1)

Detected MW: Due to glycosylation, the protein migrates to 100-140 kDa based on Tris-Bis PAGE result.

Tags: C-His-Avi

Activity: Not tested

Endotoxin: <1.0 EU/μg as determined by LAL

Purity: >95% as determined by Tris-Bis PAGE; >95% as determined by SEC-HPLC

Purification: AC

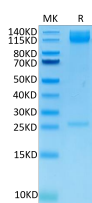
Form: Lyophilized

Storage: Lyophilized from 0.22um filtered solution in PBS (pH7.4) with 5mM DTT. Normally 5% trehalose is added as protectant before Lyophilization.

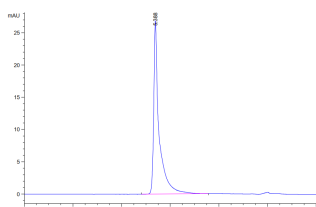
Stored at -70°C or -20°C. Avoid repeated freeze/thaw cycles.

Background: The product of this gene belongs to the integrin alpha chain family. Integrins are heterodimeric integral membrane proteins composed of an alpha chain and a beta chain. This gene encodes the integrin alpha 5 chain. Alpha chain 5 undergoes post-translational cleavage in the extracellular domain to yield disulfide-linked light and heavy chains that join with beta 1 to form a fibronectin receptor. In addition to adhesion, integrins are known to participate in cell-surface mediated signalling. [provided by RefSeq, Jul 2008]

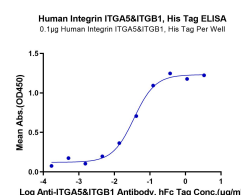
VALIDATION IMAGES



Human Integrin alpha 5 beta 1 (ITGA5&ITGB1) on Tris-Bis PAGE under reduced conditions. The purity is greater than 95%.



The purity of Human Integrin alpha 5 beta 1 (ITGA5&ITGB1) is greater than 95% as determined by SEC-HPLC.



Immobilized Human ITGA5&ITGB1, His Tag at 0.5μg/ml (100μl/Well). Dose response curve for Anti-ITGA5&ITGB1 Ab. with the EC50 of 35.4ng/ml determined by ELISA.