

Recombinant human Glypican 3 protein, C-His (HEK293)

Catalog Number: bs-47104P

Concentration: >0.5 mg/ml

AA Seq: 25-559/580

Predicted MW: 61.6

Detected MW: Due to glycosylation, the protein migrates to 25, 42, 70-115 kDa based on Tris-Bis PAGE result.

Tags: C-His

Activity: Not tested

Endotoxin: <1.0 EU/μg as determined by LAL

Purity: >95% as determined by Tris-Bis PAGE; >95% as determined by SEC-HPLC

Purification: AC

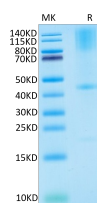
Form: Lyophilized

Storage: Lyophilized from 0.22μm filtered solution in PBS (pH7.4) with 5mM DTT. Normally 5% trehalose is added as protectant before Lyophilization.

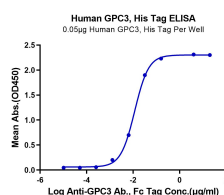
Stored at -70°C or -20°C. Avoid repeated freeze/thaw cycles.

Background: Cell surface heparan sulfate proteoglycans are composed of a membrane-associated protein core substituted with a variable number of heparan sulfate chains. Members of the glypican-related integral membrane proteoglycan family (GRIPs) contain a core protein anchored to the cytoplasmic membrane via a glycosyl phosphatidylinositol linkage. These proteins may play a role in the control of cell division and growth regulation. The protein encoded by this gene can bind to and inhibit the dipeptidyl peptidase activity of CD26, and it can induce apoptosis in certain cell types. Deletion mutations in this gene are associated with Simpson-Golabi-Behmel syndrome, also known as Simpson dysmorphia syndrome. Alternative splicing results in multiple transcript variants. [provided by RefSeq, Sep 2009]

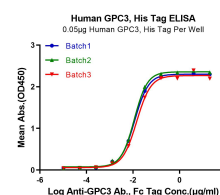
VALIDATION IMAGES



Human GPC3 on Tris-Bis PAGE under reduced condition. The purity is greater than 90%.



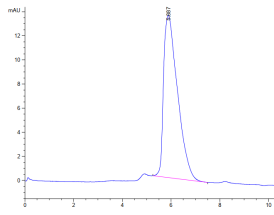
Immobilized Human GPC3, His Tag at 0.5μg/ml (100μl/Well). Dose response curve for Anti-GPC3 Ab. with the EC50 of 11.7ng/ml determined by



Immobilized Human GPC3, His Tag at 0.5μg/ml (100μl/Well). Dose response curve for Anti-GPC3 Ab. with the EC50 of 11.7/11.3/14.3ng/ml

ELISA.

determined by ELISA.



The purity of Human GPC3 is greater than 95% as determined by SEC-HPLC.