

## Recombinant human E-selectin, C-His-Avi (HEK293)

Catalog Number: bs-47086P

Concentration: >0.5 mg/ml

AA Seq: 22-556/610

Predicted MW: 61.6

Detected MW: Due to glycosylation, the protein migrates to 80-90 kDa based on Tris-Bis PAGE result.

Tags: C-His-Avi

Activity: Not tested

Endotoxin: <1.0 EU/μg as determined by LAL

Purity: >95% as determined by Tris-Bis PAGE; >95% as determined by SEC-HPLC

Purification: AC

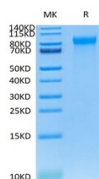
Form: Lyophilized

Storage: Lyophilized from 0.22μm filtered solution in PBS (pH7.4) with 5mM DTT. Normally 5% trehalose is added as protectant before Lyophilization.

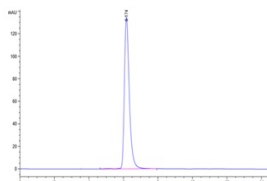
Stored at -70°C or -20°C. Avoid repeated freeze/thaw cycles.

**Background:** The protein encoded by this gene is found in cytokine-stimulated endothelial cells and is thought to be responsible for the accumulation of blood leukocytes at sites of inflammation by mediating the adhesion of cells to the vascular lining. It exhibits structural features such as the presence of lectin- and EGF-like domains followed by short consensus repeat (SCR) domains that contain 6 conserved cysteine residues. These proteins are part of the selectin family of cell adhesion molecules. Adhesion molecules participate in the interaction between leukocytes and the endothelium and appear to be involved in the pathogenesis of atherosclerosis. [provided by RefSeq, Jul 2008]

### VALIDATION IMAGES



Recombinant human E-selectin Protein on Tris-Bis PAGE under reduced conditions. The purity is greater than 95%.



The purity of Recombinant human E-selectin Protein is greater than 95% as determined by SEC-HPLC.