

## Recombinant human DLL4 protein, C-His-Avi (HEK293)

Catalog Number: bs-47082P

Concentration: >0.5 mg/ml

AA Seq: 27-524/685

Predicted MW: 55.7

Detected MW: Due to glycosylation, the protein migrates to 62-68 kDa based on Tris-Bis PAGE result.

Tags: C-His-Avi

Activity: Not tested

Endotoxin: <1.0 EU/μg as determined by LAL

Purity: >95% as determined by Tris-Bis PAGE; >95% as determined by SEC-HPLC

Purification: AC

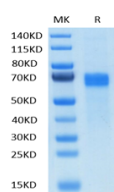
Form: Lyophilized

Storage: Lyophilized from 0.22μm filtered solution in PBS (pH7.4) with 5mM DTT. Normally 5% trehalose is added as protectant before Lyophilization.

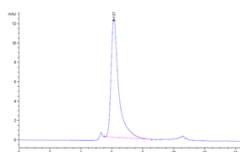
Stored at -70°C or -20°C. Avoid repeated freeze/thaw cycles.

**Background:** The LIN-12/Notch family of transmembrane receptors is believed to play a central role in development by regulating cell fate decisions. Notch proteins have been found to be overexpressed or rearranged in human tumors. Ligands for Notch include Jagged, Jagged-2 and Delta. While blocking the differentiation of progenitor cells into the B-cell lineage, Delta promotes the emergence of a population of cells with T cell/NK-cell characteristics. The protein is a membrane protein expressed in heart, pancreas, brain and muscle during gastrulation and early organogenesis and in adult heart and lung. Delta-4 is a membrane protein that activates Notch-1 and Notch-4. It is expressed in a wide range of adult and fetal tissues, especially in vascular endothelium.

### VALIDATION IMAGES



Recombinant DLL4 Protein on Tris-Bis PAGE under reduced conditions. The purity is greater than 95%.



The purity of DLL4 Protein is greater than 95% as determined by SEC-HPLC.