

Recombinant human CTLA4 protein, C-His (HEK293)

Catalog Number: bs-47080P

Concentration: >0.5 mg/ml

AA Seq: 36-161/223

Predicted MW: 14

Detected MW: Due to glycosylation, the protein migrates to 28-35 kDa based on Tris-Bis PAGE result.

Tags: C-His

Activity: Not tested

Endotoxin: <1.0 EU/μg as determined by LAL

Purity: >95% as determined by Tris-Bis PAGE; >95% as determined by SEC-HPLC

Purification: AC

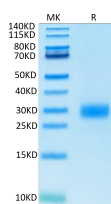
Form: Lyophilized

Storage: Lyophilized from 0.22μm filtered solution in PBS (pH7.4) with 5mM DTT. Normally 5% trehalose is added as protectant before Lyophilization.

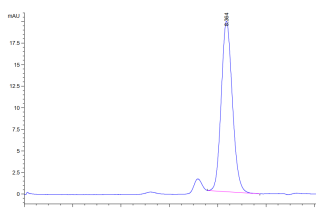
Stored at -70°C or -20°C. Avoid repeated freeze/thaw cycles.

Background: This gene is a member of the immunoglobulin superfamily and encodes a protein which transmits an inhibitory signal to T cells. The protein contains a V domain, a transmembrane domain, and a cytoplasmic tail. Alternate transcriptional splice variants, encoding different isoforms, have been characterized. The membrane-bound isoform functions as a homodimer interconnected by a disulfide bond, while the soluble isoform functions as a monomer. Mutations in this gene have been associated with insulin-dependent diabetes mellitus, Graves disease, Hashimoto thyroiditis, celiac disease, systemic lupus erythematosus, thyroid-associated orbitopathy, and other autoimmune diseases. [provided by RefSeq, Jul 2008]

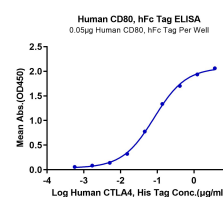
VALIDATION IMAGES



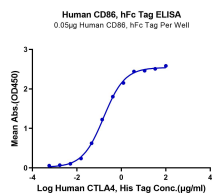
Human CTLA4 on Tris-Bis PAGE under reduced condition. The purity is greater than 95%.



The purity of Human CTLA4 is greater than 95% as determined by SEC-HPLC.



Immobilized Human CD80, hFc Tag at 0.5μg/ml (100μl/Well). Dose response curve for Human CTLA4, His Tag with the EC50 of 82.31ng/ml determined by ELISA.



Immobilized Human CTLA4,His Tag at 0.5µg/ml (100µl/Well). Dose response curve for Human CD86,hFc Tag with the EC50 of 0.16µg/ml determined by ELISA.