

## Recombinant mouse CD40 protein, C-His (HEK293)

Catalog Number: bs-47063P

Concentration: >0.5 mg/ml

AA Seq: 24-193/289

Predicted MW: 19

Detected MW: Due to glycosylation, the protein migrates to 30-35 kDa based on Tris-Bis PAGE result.

Tags: C-His

Activity: Not tested

Endotoxin: <1.0 EU/μg as determined by LAL

Purity: >95% as determined by Tris-Bis PAGE; >95% as determined by SEC-HPLC

Purification: AC

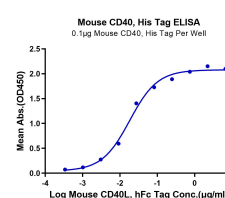
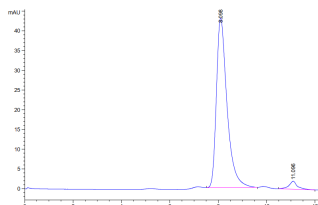
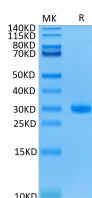
Form: Lyophilized

Storage: Lyophilized from 0.22μm filtered solution in PBS (pH7.4) with 5mM DTT. Normally 5% trehalose is added as protectant before Lyophilization.

Stored at -70°C or -20°C. Avoid repeated freeze/thaw cycles.

**Background:** Predicted to enable antigen binding activity; protein domain specific binding activity; and ubiquitin protein ligase binding activity. Involved in B cell mediated immunity; CD40 signaling pathway; and cellular calcium ion homeostasis. Acts upstream of or within several processes, including defense response to other organism; positive regulation of B cell activation; and positive regulation of interleukin-12 production. Located in external side of plasma membrane and intracellular membrane-bounded organelle. Part of CD40 receptor complex. Is expressed in several structures, including alimentary system; brain; hemolymphoid system gland; liver and biliary system; and reproductive system. Human ortholog(s) of this gene implicated in several diseases, including Kawasaki disease; autoimmune disease (multiple); end stage renal disease; hyperimmunoglobulin syndrome (multiple); and non-Hodgkin lymphoma (multiple). Orthologous to human CD40 (CD40 molecule). [provided by Alliance of Genome Resources, Apr 2022]

## VALIDATION IMAGES



Mouse CD40 on Tris-Bis PAGE under reduced condition. The purity is greater than 95%.

The purity of Mouse CD40 is greater than 95% as determined by SEC-HPLC

Immobilized Mouse CD40, His Tag at 1 $\mu$ g/ml (100 $\mu$ l/Well). Dose response curve for Mouse CD40L, hFc Tag with the EC50 of 19.1ng/ml determined by ELISA.