

Recombinant Cyn. monkey CD3E & CD3D protein, C-hFc (HEK293)

Catalog Number: bs-47053P

Concentration: >0.5 mg/ml

AA Seq: 20-198/198

Detected MW: Due to glycosylation, the protein migrates to 58-62 and 44-46 kDa based on Tris-Bis PAGE result.

Tags: C-hFc

Activity: Not tested

Endotoxin: <1.0 EU/μg as determined by LAL

Purity: >95% as determined by Tris-Bis PAGE; >95% as determined by SEC-HPLC

Purification: AC

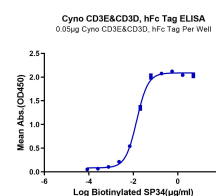
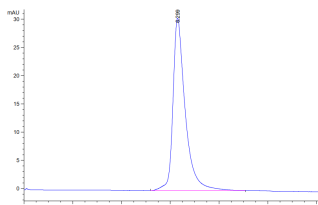
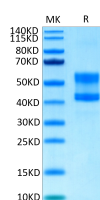
Form: Lyophilized

Storage: Lyophilized from 0.22μm filtered solution in PBS (pH7.4) with 5mM DTT. Normally 5% trehalose is added as protectant before Lyophilization.

Stored at -70°C or -20°C. Avoid repeated freeze/thaw cycles.

Background: CD3ε molecule, epsilon is also known as CD3E, is a T-cell surface single-pass type I membrane glycoprotein. CD3E contains 1 Ig-like (immunoglobulin-like) domain and 1 ITAM domain. CD3E, together with CD3-γ, CD3-δ and CD3-ζ, and the T-cell receptor α/β and γ/δ heterodimers, forms the T cell receptor-CD3 complex. This complex plays an important role in coupling antigen recognition to several intracellular signal-transduction pathways. The genes encoding the epsilon, gamma and delta polypeptides are located in the same cluster on chromosome 11. The epsilon polypeptide plays an essential role in T-cell development. CD3E plays an essential role in T-cell development, and defects in CD3E gene cause severe immunodeficiency. CD3E gene has also been linked to a susceptibility to type I diabetes in women. CD3E has been shown to interact with TOP2B, CD3EAP and NCK2.

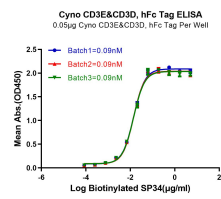
VALIDATION IMAGES



Cynomolgus CD3 Epsilon & CD3 Delta on Tris-Bis PAGE under reduced conditions. The purity is greater than 95%.

The purity of Cynomolgus CD3 Epsilon & CD3 Delta was greater than 95% as determined by SEC-HPLC.

Immobilized Cyno CD3 Epsilon & CD3 Delta ,hFc Tag at 0.5µg/ml (100µl/Well). Dose response curve for Biotinylated SP34. with EC50 of 14.2ng/ml determined by ELISA.



Immobilized Cyno CD3 Epsilon & CD3 Delta, hFc Tag at 0.5µg/ml (100µl/Well). Dose response curve for Biotinylated SP34. with EC50 of 14.2ng/ml / 13.9ng/ml / 13.9ng/ml determined by ELISA.