

Recombinant human CD24 protein, C-Llama IgG2b Fc (HEK293)

Catalog Number: bs-47051P

Concentration: >0.5 mg/ml

AA Seq: 27-59/80

Predicted MW: 29.5

Detected MW: Due to glycosylation, the protein migrates to 50-58 kDa based on Tris-Bis PAGE result.

Tags: C-Llama IgG2b Fc

Activity: Not tested

Endotoxin: <1.0 EU/μg as determined by LAL

Purity: >95% as determined by Tris-Bis PAGE; >95% as determined by SEC-HPLC

Purification: AC

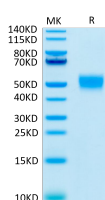
Form: Lyophilized

Storage: Lyophilized from 0.22um filtered solution in PBS (pH7.4) with 5mM DTT. Normally 5% trehalose is added as protectant before Lyophilization.

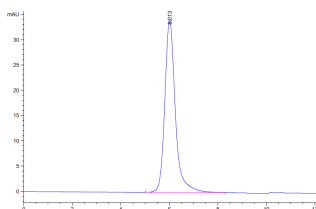
Stored at -70°C or -20°C. Avoid repeated freeze/thaw cycles.

Background: This gene encodes a sialoglycoprotein that is expressed on mature granulocytes and B cells and modulates growth and differentiation signals to these cells. The precursor protein is cleaved to a short 32 amino acid mature peptide which is anchored via a glycosyl phosphatidylinositol (GPI) link to the cell surface. This gene was missing from previous genome assemblies, but is properly located on chromosome 6. Non-transcribed pseudogenes have been designated on chromosomes 1, 15, 20, and Y. Alternative splicing results in multiple transcript variants. [provided by RefSeq, Apr 2014]

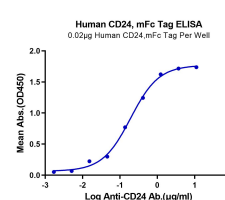
VALIDATION IMAGES



Human CD24 Protein on Tris-Bis PAGE under reduced conditions. The purity is greater than 95.



The purity of Human CD24 is greater than 95% as determined by SEC-HPLC



Immobilized Human CD24, Llama IgG2b Fc Tag at 0.2μg/ml (100μl/Well). Dose response curve for Anti-CD24 Ab. with the EC50 of 0.12μg/ml determined by ELISA.