

bs-12715R

[Primary Antibody]

PLCL2 Rabbit pAb

BioSS
ANTIBODIES

www.bioss.com.cn

sales@bioss.com.cn

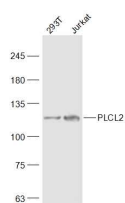
techsupport@bioss.com.cn

400-901-9800

— DATASHEET —

Host: Rabbit	Isotype: IgG	Applications: WB (1:500-2000)
Clonality: Polyclonal		Reactivity: Human (predicted: Mouse, Rat, Rabbit, Pig, Sheep, Cow, Horse)
GeneID: 23228	SWISS: Q9UPR0	
Target: PLCL2		Predicted MW.: 126 kDa
Immunogen: KLH conjugated synthetic peptide derived from human PLCL2: 331-430/1127.		Subcellular Location: Cytoplasm
Purification: affinity purified by Protein A		
Concentration: 1mg/ml		
Storage: 0.01M TBS (pH7.4) with 1% BSA, 0.02% Proclin300 and 50% Glycerol. Shipped at 4°C. Store at -20°C for one year. Avoid repeated freeze/thaw cycles.		

— VALIDATION IMAGES —



Sample: 293T(Human) Cell Lysate at 30 ug
Jurkat(Human) Cell Lysate at 30 ug Primary:
Anti-PLCL2 (bs-12715R) at 1/500 dilution
Secondary: IRDye800CW Goat Anti-Rabbit IgG at
1/20000 dilution Predicted band size: 126 kD
Observed band size: 126 kD