
TIM4 Rabbit pAb

Catalog Number: bs-22040R

Target Protein: TIM4

Concentration: 1mg/ml

Form: Liquid

Host: Rabbit

Clonality: Polyclonal

Isotype: IgG

Applications: WB (1:500-2000)

Reactivity: Mouse

Predicted MW: 42 kDa

Entrez Gene: 276891

Swiss Prot: Q6U7R4

Source: KLH conjugated synthetic peptide derived from mouse TIM4: 221-320/374.

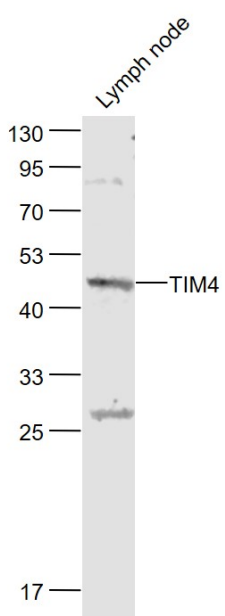
Purification: affinity purified by Protein A

Storage: 0.01M TBS (pH7.4) with 1% BSA, 0.02% Proclin300 and 50% Glycerol.

Shipped at 4°C. Store at -20°C for one year. Avoid repeated freeze/thaw cycles.

Background: The T cell immunoglobulin and mucin domain containing protein (TIM) family encodes cell surface receptors that are involved in the regulation of T helper (Th) -1 and -2 cell-mediated immunity. Studies have shown that TIM 4, which is preferentially expressed on macrophages and dendritic cells, is the natural ligand of TIM 1, and that this binding leads to T-cell expansion and cytokine production. Unlike other members of the TIM family, TIM 4 lacks a putative tyrosine phosphorylation signal sequence in its intracellular domain. The TIM 4 gene maps to a locus associated with predisposition to asthma in both mice and humans and with its connection to TIM 1-triggered Th2 responsiveness, may be considered as a candidate disease/predisposition gene for asthma.

VALIDATION IMAGES



Sample: Lymph node (Mouse) Lysate at 40 ug Primary: Anti- TIM4 (bs-22040R) at 1/1000 dilution Secondary: IRDye800CW Goat Anti-Rabbit IgG at 1/20000 dilution Predicted band size: 42 kD Observed band size: 45 kD