

bs-22054R**[Primary Antibody]****BioSS**
ANTIBODIES

www.bioss.com.cn

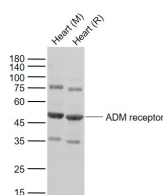
sales@bioss.com.cn

techsupport@bioss.com.cn

400-901-9800

ADM receptor Rabbit pAb**— DATASHEET —**

Host: Rabbit	Isotype: IgG	Applications: WB (1:500-2000)
Clonality: Polyclonal		
GeneID: 11536	SWISS: P43142	
Target: ADM receptor		
Immunogen: KLH conjugated synthetic peptide derived from mouse ADM receptor: 101-200/404.		
Purification: affinity purified by Protein A		Reactivity: Mouse, Rat
Concentration: 1mg/ml		
Storage: 0.01M TBS (pH7.4) with 1% BSA, 0.02% Proclin300 and 50% Glycerol. Shipped at 4°C. Store at -20°C for one year. Avoid repeated freeze/thaw cycles.		Predicted MW.: 45 kDa
Background: Adrenomedullin is a potent vasodilator peptide that exerts major effects on cardiovascular function. This gene encodes a seven-transmembrane protein that belongs to the family 1 of G-protein coupled receptors. Studies of the rat counterpart suggest that the encoded protein may function as a receptor for adrenomedullin. [provided by RefSeq, Jul 2008]		Subcellular Location: Cell membrane

— VALIDATION IMAGES —

Sample: Lane 1: Heart (Mouse) Tissue Lysate at 40 ug
Lane 2: Heart (Rat) Tissue Lysate at 40 ug
Primary: Anti-ADM receptor (bs-22054R) at 1/1000 dilution
Secondary: IRDye800CW Goat Anti-Rabbit IgG at 1/20000 dilution
Predicted band size: 45 kD
Observed band size: 47 kD