

bs-13258R**[Primary Antibody]****phospho-GABBR2 (Ser884) Rabbit pAb****BioSS**
ANTIBODIES

www.bioss.com.cn

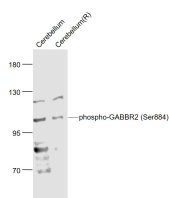
sales@bioss.com.cn

techsupport@bioss.com.cn

400-901-9800

— DATASHEET —

Host: Rabbit	Isotype: IgG	Applications: WB (1:500-2000)
Clonality: Polyclonal		Reactivity: Human, Mouse, Rat (predicted: Rabbit, Pig, Sheep, Cow, Dog, GuineaPig, Horse)
GeneID: 9568	SWISS: O75899	Predicted MW.: 104 kDa
Target: GABBR2 (Ser884)		Subcellular Location: Cell membrane
Immunogen: KLH conjugated Synthesised phosphopeptide derived from human GABBR2 around the phosphorylation site of Ser884: IN(p-S)PE.		
Purification: affinity purified by Protein A		
Concentration: 1mg/ml		
Storage: 0.01M TBS (pH7.4) with 1% BSA, 0.02% Proclin300 and 50% Glycerol. Shipped at 4°C. Store at -20°C for one year. Avoid repeated freeze/thaw cycles.		
Background: The multi-pass membrane protein encoded by this gene belongs to the G-protein coupled receptor 3 family and GABA-B receptor subfamily. The GABA-B receptors inhibit neuronal activity through G protein-coupled second-messenger systems, which regulate the release of neurotransmitters, and the activity of ion channels and adenylyl cyclase. This receptor subunit forms an active heterodimeric complex with GABA-B receptor subunit 1, neither of which is effective on its own. Allelic variants of this gene have been associated with nicotine dependence.[provided by RefSeq, Jan 2010].		

— VALIDATION IMAGES —

Sample: Cerebrum (Mouse) Lysate at 40 ug
Cerebrum (Rat) Lysate at 40 ug Primary: Anti-phospho-GABBR2 (Ser884) (bs-13258R) at 1/1000
dilution Secondary: IRDye800CW Goat Anti-Rabbit IgG at 1/20000 dilution Predicted band size: 104 kD Observed band size: 104 kD