

**[ Primary Antibody ]**



**BioSS**  
ANTIBODIES

www.bioss.com.cn

sales@bioass.com.cn

techsupport@bioss.com.cn

400-901-9800

## — DATASHEET

**Host:** Rabbit

**Isotype:** IgG

**Applications: WB (1:500-2000)**

**Clonality:** Polyclonal

**GeneID:** 3606

**SWISS:** 014116

**Target:** IL18

**Immunogen:** KLH conjugated synthetic peptide derived from human IL-18/IGIF: 101-193/193.

**Purification:** affinity purified by Protein A

**Concentration:** 1mg/ml

**Storage:** 0.01M TBS (pH7.4) with 1% BSA, 0.02% Proclin300 and 50% Glycerol.

Shipped at 4°C. Store at -20°C for one year. Avoid repeated freeze/thaw cycles.

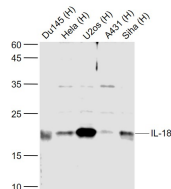
**Background:** IL18 (IFN-gamma-inducing factor, IGIF) is a novel pro-inflammatory cytokine that augments natural killer (NK) activity in spleen cells. This cytokine can induce the IFN-gamma production of T cells. The combination of this cytokine and IL12 has been shown to inhibit IL4 dependent IgE and IgG1 production, and enhance IgG2a production of B cells. IL18 binding protein (IL18BP) can specifically interact with this cytokine, and thus negatively regulate its biological activity.

**Reactivity:** Human

**Predicted MW.:** 22 kDa

**Subcellular Location:** Secreted

— VALIDATION IMAGES



25  $\mu$ g total protein per lane of various lysates (see on figure) probed with IL-18 polyclonal antibody, unconjugated (bs-4988R) at 1:1000 dilution and 4°C overnight incubation. Followed by conjugated secondary antibody incubation at r.t. for 60 min.

## — SELECTED CITATIONS

- **[IF=5]** Wang Lei. et al. Soybean glycinin and  $\beta$ -conglycinin damage the intestinal barrier by triggering oxidative stress and inflammatory response in weaned piglets. EUR J NUTR. 2023 Jun;:1-14 WB ;Pig. 37358571
- **[IF=4.486]** Linzhao Li. et al. Mesenchymal stromal cells protect hepatocytes from lipotoxicity through alleviation of endoplasmic reticulum stress by restoring SERCA activity. 2021 Feb 16 WB ;Human. 33591626
- **[IF=3.8]** Cuicui Zhuang. et al. Escherichia coli infection mediates pyroptosis via activating p53-p21 pathway-regulated apoptosis and cell cycle arrest in bovine mammary epithelial cells. MICROB PATHOGENESIS. 2023 Sep;:106338 WB ;Bovine. 37683833
- **[IF=2.311]** Teng Ma. et al. Interleukin-18 and -10 may be associated with lymph node metastasis in breast cancer. Oncol Lett. 2021 Apr;21(4):1-1 IHC ;Human. 33664817

Important Note: This product as supplied is intended for research use only, not for use in human, therapeutic or diagnostic applications.