

bs-12890R**[Primary Antibody]****phospho-Brk (Tyr447) Rabbit pAb****Bioss**
ANTIBODIES

www.bioss.com.cn

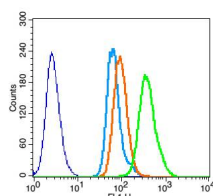
sales@bioss.com.cn

techsupport@bioss.com.cn

400-901-9800

— DATASHEET —

Host: Rabbit Clonality: Polyclonal GeneID: 5753 Target: Brk (Tyr447) Immunogen: KLH conjugated synthesised phosphopeptide derived from human Brk around the phosphorylation site of Tyr447: TS(p-Y)EN. Purification: affinity purified by Protein A Concentration: 1mg/ml Storage: 0.01M TBS (pH7.4) with 1% BSA, 0.02% Proclin300 and 50% Glycerol. Shipped at 4°C. Store at -20°C for one year. Avoid repeated freeze/thaw cycles. Background: This protein encoded is a cytoplasmic nonreceptor protein kinase which may function as an intracellular signal transducer in epithelial tissues. Overexpression of this gene in mammary epithelial cells leads to sensitization of the cells to epidermal growth factor and results in a partially transformed phenotype. Expression of this gene has been detected at low levels in some breast tumors but not in normal breast tissue. Its presence in the nucleus appears to be linked to suppression of tumor progression. The encoded protein has been shown to undergo autophosphorylation.	Isotype: IgG SWISS: Q13882	Applications: Flow-Cyt (3µg/Test) Reactivity: Human Predicted MW.: 52 kDa Subcellular Location: Cell membrane ,Cytoplasm ,Nucleus
--	---	--

— VALIDATION IMAGES —

Blank control: U937(blue) Isotype Control
 Antibody: Rabbit IgG(orange) ; Secondary
 Antibody: Goat anti-rabbit IgG-FITC(white blue),
 Dilution: 1:100 in 1 X PBS containing 0.5% BSA ;
 Primary Antibody Dilution: 5µl in 100 µl 1X PBS
 containing 0.5% BSA(green).

— SELECTED CITATIONS —

- **[IF=3.98]** AKI, Mohamed R., et al. "The Marine-Derived Siphonolol A-4-O-3', 4'-Dichlorobenzoate Inhibits Breast Cancer Growth and Motility in Vitro and in Vivo through the Suppression of Brk and FAK Signaling." Marine Drugs 12.4 (2014): 2282-2304. IHC ;="Mouse". 24736807