

bs-20315R

[Primary Antibody]

KCTD16 Rabbit pAb

Bioss
ANTIBODIES

www.bioss.com.cn

sales@bioss.com.cn

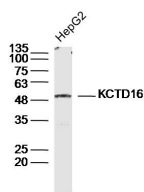
techsupport@bioss.com.cn

400-901-9800

— DATASHEET —

Host: Rabbit	Isotype: IgG	Applications: WB (1:500-2000)
Clonality: Polyclonal		Reactivity: Human (predicted: Mouse, Rat, Cow)
GeneID: 57528	SWISS: Q68DU8	
Target: KCTD16		Predicted MW.: 49 kDa
Immunogen: KLH conjugated synthetic peptide derived from human KCTD16: 301-400/428.		Subcellular Location: Cell membrane
Purification: affinity purified by Protein A		
Concentration: 1mg/ml		
Storage: Preservative: 0.02% Proclin300, Constituents: 1% BSA, 0.01M PBS, pH7.4. Shipped at 4°C. Store at -20°C for one year. Avoid repeated freeze/thaw cycles.		
Background: Auxiliary subunit of GABA-B receptors that determine the pharmacology and kinetics of the receptor response. Increases agonist potency and markedly alter the G-protein signaling of the receptors by accelerating onset and promoting desensitization.		

— VALIDATION IMAGES —



Sample: HepG2 Cell (Human) Lysate at 30 ug
Primary: Anti- KCTD16 (bs-20315R) at 1/300
dilution Secondary: IRDye800CW Goat Anti-
Rabbit IgG at 1/20000 dilution Predicted band
size: 49kD Observed band size: 49kD