

JSRV-ENV Mouse mAb

Catalog Number: bsm-41046M

Target Protein: JSRV-ENV

Concentration: 1mg/ml

Form: Size : 50ul/100ul/200ul

Liquid

Size : 200ug (PBS only)

Lyophilized

Note: Centrifuge tubes before opening. Reconstitute the lyophilized product in distilled water. Optimal concentration should be determined by the end user.

Host: Mouse

Clonality: Monoclonal

Clone No.: 1D8

Isotype: IgG

Applications: WB (1:500-2000)

Reactivity: JSRV

Predicted MW: 66 kDa

Purification: affinity purified by Protein G

Storage: Size : 50ul/100ul/200ul

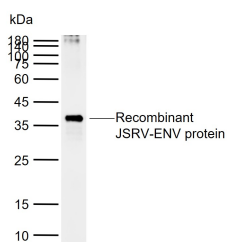
0.01M TBS (pH7.4) with 1% BSA, 0.02% Proclin300 and 50% Glycerol.

Size : 200ug (PBS only)

0.01M PBS

Shipped at 4°C. Store at -20°C for one year. Avoid repeated freeze/thaw cycles.

VALIDATION IMAGES



Sample: Lane 1: Recombinant JSRV-ENV protein, His Primary: Anti-JSRV-ENV (bsm-41046M) at 1/1000 dilution Secondary: IRDye800CW Goat Anti- Mouse IgG at 1/20000 dilution Predicted band size: 66 kDa
Observed band size: 37 kDa