

bsm-33197M

[Primary Antibody]

Bioss
ANTIBODIES

www.bioss.com.cn

sales@bioss.com.cn

techsupport@bioss.com.cn

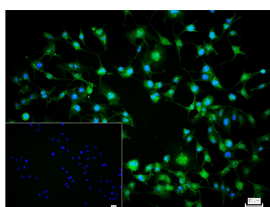
400-901-9800

Pan Methylated Lysine Mouse mAb

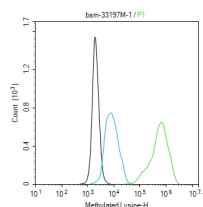
— DATASHEET —

Host: Mouse	Isotype: IgG1	Applications: WB (1:1000-5000) IHC-P (1:100-500) IHC-F (1:100-500) IF (1:100-500) Flow-Cyt (1µg/Test) ICC/IF (1:100-200) Reactivity: Human, Species independent
Clonality: Monoclonal	CloneNo.: 7F4	
Target: Pan Methylated Lysine		
Purification: affinity purified by Protein G		
Concentration: 1mg/ml		
Storage: Size : 50ul/100ul/200ul 0.01M TBS (pH7.4) with 1% BSA, 0.02% Proclin300 and 50% Glycerol. Size : 200ug (PBS only) 0.01M PBS Shipped at 4°C. Store at -20°C for one year. Avoid repeated freeze/thaw cycles.		

— VALIDATION IMAGES —



4% Paraformaldehyde-fixed HeLa (treated with Sodium Butyrate (5mM, 24h)) (H) cell; Triton X-100 at r.t. for 20 min; Antibody incubation with (Methylated Lysine) monoclonal Antibody, unconjugated (bsm-33197M) 1:100, 90 min at 37°C; followed by conjugated Goat Anti-Mouse IgG antibody (green, bs-60296G-FITC) at 37°C for 90 min, DAPI (blue, C02-04002) was used to stain the cell nuclei. PBS instead of the primary antibody was used as the blank control.



The HeLa (treated with Sodium Butyrate (5mM, 24h)) (H) cells were fixed with 4% PFA (10 min at r.t.) and then permeabilized with 90% ice-cold methanol for 20 min at -20°C, the cells then were incubated in 5%BSA to block non-specific protein-protein interactions (30 min at r.t.). Primary Antibody (green): Mouse Anti-Methylated Lysine antibody (bsm-33187M): 1 µg/10⁶ cells; Secondary Antibody (white blue): Goat anti-Mouse IgG-FITC (bs-60296G-FITC): 1 µg/test. Blank control (black): PBS. Acquisition of 20,000 events was performed.