

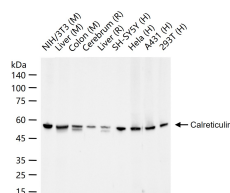
**bsm-52436R****[ Primary Antibody ]****BioSS**  
**ANTIBODIES**

www.bioss.com.cn

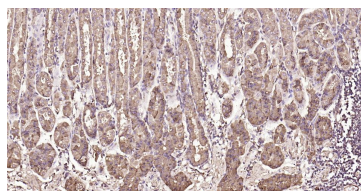
sales@bioss.com.cn

techsupport@bioss.com.cn

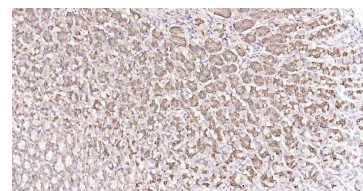
400-901-9800

**Calreticulin Recombinant Rabbit mAb****— DATASHEET —****Host:** Rabbit**Isotype:** IgG**Clonality:** Recombinant**CloneNo.:** 3D1**GeneID:** 811**SWISS:** P27797**Target:** Calreticulin**Immunogen:** A synthesized peptide derived from human Calreticulin: 45-86/417.**Purification:** affinity purified by Protein A**Concentration:** 1mg/ml**Storage:** 1\*TBS (pH7.4), 0.05% BSA, 40% Glycerol. Preservative: 0.02% Proclin300.  
Shipped at 4°C. Store at -20°C for one year. Avoid repeated freeze/thaw cycles.**Background:** Calreticulin is a highly conserved chaperone protein which resides primarily in the endoplasmic reticulum, and is involved in a variety of cellular processes, among them, cell adhesion. Additionally, it functions in protein folding quality control and calcium homeostasis. Calreticulin is also found in the nucleus, suggesting that it may have a role in transcription regulation. Systemic lupus erythematosus is associated with increased autoantibody titers against calreticulin. Recurrent mutations in calreticulin have been linked to various neoplasms, including the myeloproliferative type.[provided by RefSeq, May 2020]**Applications:** WB (1:2000-10000)**IHC-P** (1:200-800)**IHC-F** (1:200-800)**IF** (1:200-800)**ICC/IF** (1:100-200)**Reactivity:** Human, Mouse, Rat**Predicted**  
**MW.:** 44 kDa**Subcellular** Secreted ,Extracellular  
**Location:** matrix ,Cell membrane  
,Cytoplasm**— VALIDATION IMAGES —**

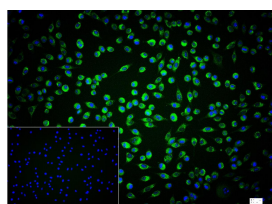
25 ug total protein per lane of various lysates (see on figure) probed with Calreticulin monoclonal antibody, unconjugated (bsm-52436R) at 1:5000 dilution and 4°C overnight incubation. Followed by conjugated secondary antibody incubation at r.t. for 60 min.



Paraformaldehyde-fixed, paraffin embedded Human Fundus; Antigen retrieval by boiling in sodium citrate buffer (pH6.0) for 15 min; Antibody incubation with Calreticulin Monoclonal Antibody, Unconjugated(bsm-52436R) at 1:200 overnight at 4°C, followed by conjugation to the SP Kit (Rabbit, SP-0023)and DAB (C-0010) staining.



Paraformaldehyde-fixed, paraffin embedded Rat Stomach; Antigen retrieval by boiling in sodium citrate buffer (pH6.0) for 15 min; Antibody incubation with Calreticulin Monoclonal Antibody, Unconjugated(bsm-52436R) at 1:200 overnight at 4°C, followed by conjugation to the SP Kit (Rabbit, SP-0023)and DAB (C-0010) staining.



4% Paraformaldehyde-fixed SH-SY5Y (H) cell; Triton X-100 at r.t. for 20 min; Antibody incubation with (Calreticulin) monoclonal Antibody, unconjugated (bsm-52436R) 1:100, 90 min at 37°C; followed by conjugated Goat Anti-Rabbit IgG antibody (green, bs-60295G-BF488) at 37°C for 90 min, DAPI (blue, C02-04002) was used to stain the cell nuclei. PBS instead of the

Important Note: This product as supplied is intended for research use only, not for use in human, therapeutic or diagnostic applications.



primary antibody was used as the blank control.

## — SELECTED CITATIONS —

---

- **[IF=12.9]** Shuangshuang Ji. et al. GSH-activable and cytolytic iPep-coupled immune nanoagonist for cancer synergetic therapy. *BIOMATERIALS*. 2025 Nov;322:123402 FC ;Mouse. 40373515
- **[IF=11.3]** Hai Wang. et al. Photoirradiation- and Extracellular-Matrix-Encouraged Photon-Transition Switching Regulates Spatiotemporal Sequential Photoimmunotherapy. *SMALL STRUCT.* 2025 Jan;;2400574 IF ;Mouse. 10.1002/ssstr.202400574
- **[IF=9.4]** Yundi Wu. et al. Excessive autophagy-inducing and highly penetrable biomineralized bacteria for multimodal imaging-guided and mild hyperthermia-enhanced immunogenic cell death. *J COLLOID INTERF SCI.* 2025 Feb;679:181 IHC,WB ;Mouse. 39362143
- **[IF=7.7]** Huanran Qu. et al.NIR-II photo- and sono-responsive hyaluronic acid-capped nanozymes for glioblastoma-targeting theranostics..*International Journal of Biological Macromolecules*.2025 Mar 4:141737. IF ;Mouse. 40049489