

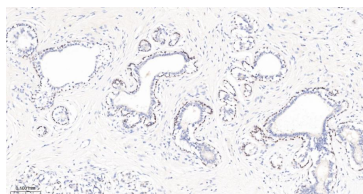
bsm-33415M**[Primary Antibody]****BioSS**
ANTIBODIES

www.bioss.com.cn

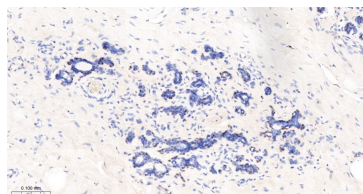
sales@bioss.com.cn

techsupport@bioss.com.cn

400-901-9800

P63 Mouse mAb**— DATASHEET —****Host:** Mouse**Isotype:** IgG1**Clonality:** Monoclonal**CloneNo.:** 5H10**GeneID:** 8626**SWISS:** Q9H3D4**Target:** P63**Purification:** affinity purified by Protein G**Concentration:** 1mg/ml**Storage:** 0.01M TBS (pH7.4) with 1% BSA, 0.02% Proclin300 and 50% Glycerol.
Shipped at 4°C. Store at -20°C for one year. Avoid repeated freeze/thaw cycles.**Background:** This gene encodes a member of the p53 family of transcription factors. An animal model, p63 ^{-/-} mice, has been useful in defining the role this protein plays in the development and maintenance of stratified epithelial tissues. p63 ^{-/-} mice have several developmental defects which include the lack of limbs and other tissues, such as teeth and mammary glands, which develop as a result of interactions between mesenchyme and epithelium. Mutations in this gene are associated with ectodermal dysplasia, and cleft lip/palate syndrome 3 (EEC3); split-hand/foot malformation 4 (SHFM4); ankyloblepharon-ectodermal defects-cleft lip/palate; ADULT syndrome (acro-dermato-ungual-lacrima-tooth); limb-mammary syndrome; Rap-Hodgkin syndrome (RHS); and orofacial cleft 8. Both alternative splicing and the use of alternative promoters results in multiple transcript variants encoding different proteins. Many transcripts encoding different proteins have been reported but the biological validity and the full-length nature of these variants have not been determined. [provided by RefSeq, Jul 2008].**Applications:** IHC-P (1:100-500)**IHC-F** (1:100-500)**IF** (1:100-500)**Reactivity:** Human, Mouse, Rat**Predicted
MW.:** 77 kDa**Subcellular
Location:** Nucleus**— VALIDATION IMAGES —**

Paraformaldehyde-fixed, paraffin embedded Human Breast Cancer; Antigen retrieval by boiling in sodium citrate buffer (pH6.0) for 15 min; The section was incubated with P63 Monoclonal Antibody, Unconjugated (bsm-33415M) at 1:600 overnight at 4°C, followed by conjugation to the bs-40296G-HRP and DAB (C-0010) staining.



Paraformaldehyde-fixed, paraffin embedded Human Breast; Antigen retrieval by boiling in sodium citrate buffer (pH6.0) for 15 min; The section was incubated with P63 Monoclonal Antibody, Unconjugated (bsm-33415M) at 1:600 overnight at 4°C, followed by conjugation to the bs-40296G-HRP and DAB (C-0010) staining.