

bs-4462R**[Primary Antibody]****Bioss**
ANTIBODIES

www.bioss.com.cn

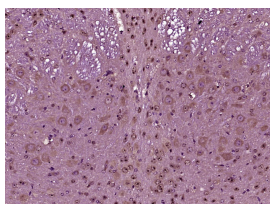
sales@bioss.com.cn

techsupport@bioss.com.cn

400-901-9800

TBC1D13 Rabbit pAb**— DATASHEET —**

Host: Rabbit	Isotype: IgG	Applications: IHC-P (1:100-500) IHC-F (1:100-500) IF (1:100-500)
Clonality: Polyclonal		
GeneID: 54662	SWISS: Q9NVG8	
Target: TBC1D13		
Immunogen: KLH conjugated synthetic peptide derived from human TBC1D13: 51-150/400.		
Purification: affinity purified by Protein A		Reactivity: Mouse (predicted: Human, Rat, Pig, Sheep, Cow, Chicken, Horse)
Concentration: 1mg/ml		
Storage: 0.01M TBS (pH7.4) with 1% BSA, 0.02% Proclin300 and 50% Glycerol. Shipped at 4°C. Store at -20°C for one year. Avoid repeated freeze/thaw cycles.		Predicted MW.: 46 kDa
Background: 2600014A06Rik; BC025586; FLJ10743; MGC38260; OTTHUMP00000022298; OTTMUSP00000018144; RP11 545E17.5; RP23 315H12.1; TBC1 domain family member 13.		Subcellular Location: Cell membrane ,Cytoplasm

— VALIDATION IMAGES —

Paraformaldehyde-fixed, paraffin embedded (Mouse brain); Antigen retrieval by boiling in sodium citrate buffer (pH6.0) for 15min; Block endogenous peroxidase by 3% hydrogen peroxide for 20 minutes; Blocking buffer (normal goat serum) at 37°C for 30min; Antibody incubation with (TBC1D13) Polyclonal Antibody, Unconjugated (bs-4462R) at 1:400 overnight at 4°C, followed by operating according to SP Kit(Rabbit) (sp-0023) instructions and DAB staining.