
Gephyrin Rabbit pAb

Catalog Number: bs-6644R

Target Protein: Gephyrin

Concentration: 1mg/ml

Form: Liquid

Host: Rabbit

Clonality: Polyclonal

Isotype: IgG

Applications: WB (1:500-2000)

Reactivity: Mouse (predicted:Human, Rat, Rabbit, Pig, Cow, Dog, Horse)

Predicted MW: 83 kDa

Entrez Gene: 10243

Swiss Prot: Q9NQX3

Source: KLH conjugated synthetic peptide derived from human Gephyrin: 231-330/736.

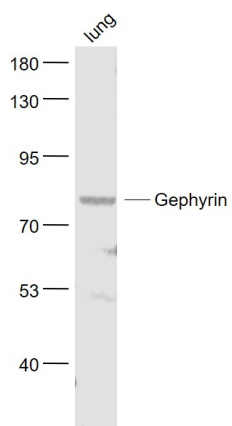
Purification: affinity purified by Protein A

Storage: 0.01M TBS (pH7.4) with 1% BSA, 0.02% Proclin300 and 50% Glycerol.

Shipped at 4°C. Store at -20°C for one year. Avoid repeated freeze/thaw cycles.

Background: The sub-membraneous region at the postsynaptic membrane contains a number of proteins critical for receptor targeting. Gephyrin is a microtubule-associated protein highly expressed in brain and localized to neuronal postsynaptic membranes. Gephyrin is essential for the postsynaptic localization of the inhibitory glycine receptor and is thought to anchor the receptor to subsynaptic microtubules. The protein is expressed in most mammalian tissues with predominant expression in brain. At least five additional splice variants of Gephyrin ranging in molecular weight have been identified in rat and human brain tissue.

VALIDATION IMAGES



Sample: Lung (Mouse) Lysate at 40 ug Primary: Anti- Gephyrin (bs-6644R) at 1/1000 dilution Secondary: IRDye800CW Goat Anti-Rabbit IgG at 1/20000 dilution Predicted band size: 83 kD Observed band size: 83 kD