

Recombinant human Inhibin Beta B protein, His (HEK293)

Catalog Number: bs-43020P

Concentration: >0.5 mg/ml

AA Seq: 29-407/407

Predicted MW: 42

Detected MW: 42 kDa

Tags: C-His

Activity: Yes

Endotoxin: Not analyzed

Purity: >95% as determined by SDS-PAGE

Purification: AC

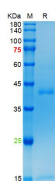
Form: Lyophilized or Liquid

Storage: PBS (pH7.4).

Stored at -70°C or -20°C. Avoid repeated freeze/thaw cycles.

Background: The inhibin beta B subunit joins the alpha subunit to form a pituitary FSH secretion inhibitor. Inhibin has been shown to regulate gonadal stromal cell proliferation negatively and to have tumour-suppressor activity. In addition, serum levels of inhibin have been shown to reflect the size of granulosa-cell tumors and can therefore be used as a marker for primary as well as recurrent disease. Because expression in gonadal and various extragonadal tissues may vary severalfold in a tissue-specific fashion, it is proposed that inhibin may be both a growth/differentiation factor and a hormone. Furthermore, the beta B subunit forms a homodimer, activin B, and also joins with the beta A subunit to form a heterodimer, activin AB, both of which stimulate FSH secretion. [provided by RefSeq].

VALIDATION IMAGES



The purity of the protein is greater than 90% as determined by reducing SDS-PAGE.