

[Primary Antibody]

Beclin 1 Rabbit pAb



BioSS
ANTIBODIES

www.bioss.com.cn

sales@bioss.com.cn

techsupport@bioss.com.cn

400-901-9800

— DATASHEET

Host: Rabbit

Isotype: IgG

Clonality: Polyclonal

GeneID: 8678

SWISS: 014457

Target: Beclin 1

Immunogen: KLH conjugated synthetic peptide derived from human BECN1: 181-280/450.

Purification: affinity purified by Protein A

Concentration: 1mg/ml

Storage: 0.01M TBS (pH7.4) with 1% BSA, 0.02% Proclin300 and 50% Glycerol.

Shipped at 4°C. Store at -20°C for one year. Avoid repeated freeze/thaw cycles.

Background: Beclin 1 is the first identified mammalian gene to mediate autophagy and also has tumor suppressor and antiviral function. Autophagy, a process of bulk protein degradation through an autophagosomic lysosomal pathway, is important for differentiation, survival during nutrient deprivation, and normal growth control, and is often defective in tumor cells. Beclin 1 was originally isolated in a yeast two hybrid screen to identify Bcl 2 binding partners and maps to a tumor susceptibility locus on human chromosome 17q21 that is frequently monoallelically deleted in human breast, ovarian and prostate cancer. Beclin 1 encodes an evolutionarily conserved 52kDa coiled coil protein that is expressed in human muscle, epithelial cells and neurons.

Applications: WB (1:500-1000)

IHC-P (1:400-800)

IHC-F (1:400-800)

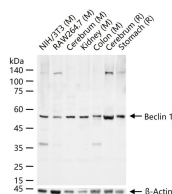
IF (1:100-500)

Reactivity: Human, Mouse, Rat
(predicted: Rabbit)

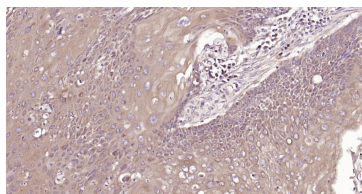
Predicted
MW.: 60 kDa

Subcellular Location: Cell membrane ,Cytoplasm

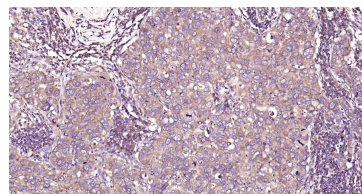
— VALIDATION IMAGES



25 ug total protein per lane of various lysates (see on figure) probed with Beclin 1 polyclonal antibody, unconjugated (bs-55024R) at 1:1000 dilution and 4°C overnight incubation. Followed by conjugated secondary antibody incubation at r.t. for 60 min.



Paraformaldehyde-fixed, paraffin embedded Human Cervical Cancer; Antigen retrieval by boiling in sodium citrate buffer (pH6.0) for 15 min; The section was incubated with Beclin 1 Polyclonal Antibody, Unconjugated (bs-55024R) at 1:200 overnight at 4°C, followed by conjugation to the bs-0295G-HRP and DAB (C-0010) staining.



Paraformaldehyde-fixed, paraffin embedded Human Breast Cancer; Antigen retrieval by boiling in sodium citrate buffer (pH6.0) for 15 min; The section was incubated with Beclin 1 Polyclonal Antibody, Unconjugated (bs-55024R) at 1:200 overnight at 4°C, followed by conjugation to the bs-0295G-HRP and DAB (C-0010) staining.

— SELECTED CITATIONS

- **[IF=6.196]** Cheng He. et al. Crosstalk of renal cell carcinoma cells and tumor-associated macrophages aggravates tumor progression by modulating muscleblind-like protein 2/B-cell lymphoma 2/beclin 1-mediated autophagy. CYTOTHERAPY. 2022 Oct;; WB ;Human. 36244911
- **[IF=5.3]** Kun Wang. et al. Protective effects of tetramethylpyrazine on myocardial ischemia/reperfusion injury involve NLRP3 inflammasome suppression by autophagy activation. BIOCHEM PHARMACOL. 2024 Sep;;116541 WB ;Rat,Mouse. 39284501

Important Note: This product as supplied is intended for research use only, not for use in human, therapeutic or diagnostic applications.

- **[IF=4.9]** Qian Zhang. et al. Proteomics and Expression of HIF2 α /BNIP3L Signaling in Yak Brains at Different Altitudes. INTERNATIONAL JOURNAL OF MOLECULAR SCIENCES. 2025 Feb 16;26(4):1675. Western Blot, IHC, IF ;Yak. 10.3390/ijms26041675