

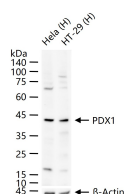
bsm-54153R**[Primary Antibody]****BioSS**
ANTIBODIES

www.bioss.com.cn

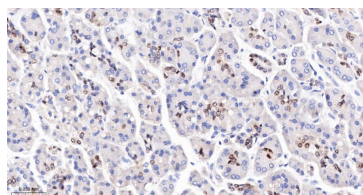
sales@bioss.com.cn

techsupport@bioss.com.cn

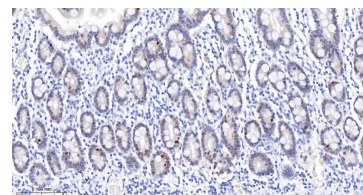
400-901-9800

PDX1 Recombinant Rabbit mAb**DATASHEET****Host:** Rabbit**Isotype:** IgG**Clonality:** Recombinant**CloneNo.:** 34A1**GeneID:** 3651**SWISS:** P52945**Target:** PDX1**Purification:** affinity purified by Protein A**Concentration:** 1mg/ml**Storage:** 0.01M TBS (pH7.4) with 1% BSA, 0.02% Proclin300 and 50% Glycerol.
Shipped at 4°C. Store at -20°C for one year. Avoid repeated freeze/thaw cycles.**Background:** The protein encoded by this gene is a transcriptional activator of several genes, including insulin, somatostatin, glucokinase, islet amyloid polypeptide, and glucose transporter type 2. The encoded nuclear protein is involved in the early development of the pancreas and plays a major role in glucose-dependent regulation of insulin gene expression. Defects in this gene are a cause of pancreatic agenesis, which can lead to early-onset insulin-dependent diabetes mellitus (IDDM), as well as maturity onset diabetes of the young type 4 (MODY4). [provided by RefSeq, Aug 2017]**Applications:** WB (1:500-2000)**IHC-P** (1:50-200)**IHC-F** (1:50-200)**IF** (1:50-200)**ICC/IF** (1:50-200)**Reactivity:** Human**Predicted MW.:** 30 kDa**Subcellular Location:** Cytoplasm ,Nucleus**VALIDATION IMAGES**

25 ug total protein per lane of various lysates (see on figure) probed with PDX1 monoclonal antibody, unconjugated (bsm-54153R) at 1:1000 dilution and 4°C overnight incubation. Followed by conjugated secondary antibody incubation at r.t. for 60 min.



Paraformaldehyde-fixed, paraffin embedded Human Pancreas; Antigen retrieval by boiling in sodium citrate buffer (pH6.0) for 15 min; The section was incubated with PDX1 Monoclonal Antibody, Unconjugated (bsm-54153R) at 1:200 overnight at 4°C, followed by conjugation to the bs-0295G-HRP and DAB (C-0010) staining.



Paraformaldehyde-fixed, paraffin embedded Human Duodenum; Antigen retrieval by boiling in sodium citrate buffer (pH6.0) for 15 min; The section was incubated with PDX1 Monoclonal Antibody, Unconjugated (bsm-54153R) at 1:200 overnight at 4°C, followed by conjugation to the bs-0295G-HRP and DAB (C-0010) staining.