

bs-10058R**[Primary Antibody]****MMP19 Rabbit pAb****Bioss**
ANTIBODIES

www.bioss.com.cn

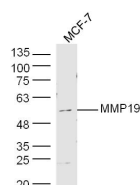
sales@bioss.com.cn

techsupport@bioss.com.cn

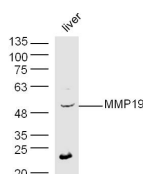
400-901-9800

— DATASHEET —

Host: Rabbit	Isotype: IgG	Applications: WB (1:500-2000)
Clonality: Polyclonal		Reactivity: Human, Mouse (predicted: Rat, Rabbit, Pig, Cow, Dog, Horse)
GeneID: 4327	SWISS: C0M4B0	Predicted MW.: 59 kDa
Target: MMP19		Subcellular Location: Secreted ,Extracellular matrix
Immunogen: KLH conjugated synthetic peptide derived from human MMP19: 251-350/508.		
Purification: affinity purified by Protein A		
Concentration: 1mg/ml		
Storage: 0.01M TBS (pH7.4) with 1% BSA, 0.02% Proclin300 and 50% Glycerol. Shipped at 4°C. Store at -20°C for one year. Avoid repeated freeze/thaw cycles.		
Background: This gene encodes a member of a family of proteins that are involved in the breakdown of extracellular matrix in normal physiological processes, such as embryonic development, reproduction, and tissue remodeling, as well as in disease processes, such as arthritis and metastasis. The encoded protein is secreted as an inactive proprotein, which is activated upon cleavage by extracellular proteases. Alternative splicing results in multiple transcript variants for this gene. [provided by RefSeq, Jan 2013]		

— VALIDATION IMAGES —

Sample: MCF-7 Cell (Human) Lysate at 40 ug
Primary: Anti-MMP19 (bs-10058R) at 1/300
dilution Secondary: IRDye800CW Goat Anti-
Rabbit IgG at 1/20000 dilution Predicted band
size: 59 kD Observed band size: 59 kD



Sample: Liver (Mouse) Lysate at 40 ug Primary:
Anti-MMP19 (bs-10058R) at 1/300 dilution
Secondary: IRDye800CW Goat Anti-Rabbit IgG at
1/20000 dilution Predicted band size: 59 kD
Observed band size: 59 kD