

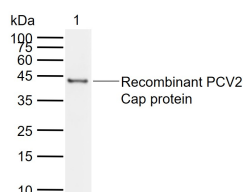
bs-10057R**[Primary Antibody]****PCV2 capsid protein Rabbit pAb****BioSS**
ANTIBODIES

www.bioss.com.cn

sales@bioss.com.cn

techsupport@bioss.com.cn

400-901-9800

— DATASHEET —**Host:** Rabbit**Isotype:** IgG**Clonality:** Polyclonal**Target:** PCV2 capsid protein**Immunogen:** KLH conjugated synthetic peptide derived from PCV2 capsid protein: 133-233/233.**Purification:** affinity purified by Protein A**Concentration:** 1mg/ml**Storage:** 0.01M TBS (pH7.4) with 1% BSA, 0.02% Proclin300 and 50% Glycerol.
Shipped at 4°C. Store at -20°C for one year. Avoid repeated freeze/thaw cycles.**Applications:** WB (1:500-2000)**Reactivity:** PCV2**Predicted MW.:** 28 kDa**— VALIDATION IMAGES —**

Sample: Lane 1: Recombinant PCV2 Cap protein,
Trx & His(bs-41401P-500ng) Primary: Anti-PCV2
capsid protein (bs-10057R) at 1/1000 dilution
Secondary: IRDye800CW Goat Anti-Rabbit IgG at
1/20000 dilution Predicted band size: 28 kDa
Observed band size: 44 kDa

— SELECTED CITATIONS —

- **[IF=4.32]** Liu et al. Cubosome nanoparticles potentiate immune properties of immunostimulants. (2016)
Int.J.Nanomedicin. 11:3571-83 IHC ;Mouse. 27536099