

bs-19019R**[Primary Antibody]****NARFL Rabbit pAb****BioSS**
ANTIBODIES

www.bioss.com.cn

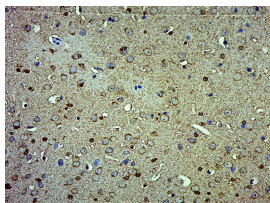
sales@bioss.com.cn

techsupport@bioss.com.cn

400-901-9800

— DATASHEET —

Host: Rabbit	Isotype: IgG	Applications: IHC-P (1:100-500) IHC-F (1:100-500) IF (1:100-500)
Clonality: Polyclonal		
GeneID: 64428	SWISS: Q9H6Q4	
Target: NARFL		
Immunogen: KLH conjugated synthetic peptide derived from human NARFL: 201-300/476.		
Purification: affinity purified by Protein A		Reactivity: Mouse (predicted: Human, Rat, Chicken, Dog)
Concentration: 1mg/ml		
Storage: 0.01M TBS (pH7.4) with 1% BSA, 0.02% Proclin300 and 50% Glycerol. Shipped at 4°C. Store at -20°C for one year. Avoid repeated freeze/thaw cycles.		Predicted MW.: 53 kDa
Background: NARFL (nuclear prelamina A recognition factor-like), also known as cytosolic Fe-S cluster assembly factor NARFL, HPRN, PRN (protein related to Narf), LET1L or IOP1 (iron-only hydrogenase-like protein 1), is a 476 amino acid protein belonging to the NARF family. Widely expressed, NARFL is required for extramitochondrial sulfur and iron protein maturation and may indirectly negatively regulate HIF-1 α expression. Existing as three alternatively spliced isoforms, NARFL is encoded by a gene that maps to human chromosome 16p13.3 and murine chromosome 17 A3.3.		Subcellular Location: Cytoplasm ,Nucleus

— VALIDATION IMAGES —

Paraformaldehyde-fixed, paraffin embedded (Mouse brain); Antigen retrieval by boiling in sodium citrate buffer (pH6.0) for 15min; Block endogenous peroxidase by 3% hydrogen peroxide for 20 minutes; Blocking buffer (normal goat serum) at 37°C for 30min; Antibody incubation with (NARFL) Polyclonal Antibody, Unconjugated (bs-19019R) at 1:500 overnight at 4°C, followed by a conjugated secondary (sp-0023) for 20 minutes and DAB staining.