

bs-16079R**[Primary Antibody]****FGD3 Rabbit pAb****BioSS**
ANTIBODIES

www.bioss.com.cn

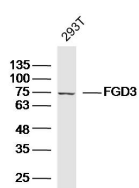
sales@bioss.com.cn

techsupport@bioss.com.cn

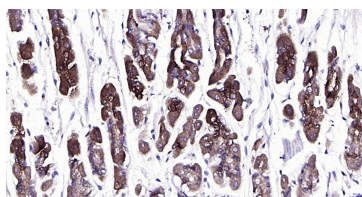
400-901-9800

— DATASHEET —

Host: Rabbit	Isotype: IgG	Applications: WB (1:500-2000)
Clonality: Polyclonal		IHC-P (1:100-500)
GeneID: 89846	SWISS: Q5JSP0	IHC-F (1:100-500)
Target: FGD3		IF (1:100-500)
Immunogen: KLH conjugated synthetic peptide derived from human FGD3: 501-600/725.		Reactivity: Human, Mouse (predicted: Rat)
Purification: affinity purified by Protein A		
Concentration: 1mg/ml		Predicted MW.: 79 kDa
Storage: 0.01M TBS (pH7.4) with 1% BSA, 0.02% Proclin300 and 50% Glycerol. Shipped at 4°C. Store at -20°C for one year. Avoid repeated freeze/thaw cycles.		Subcellular Location: Cytoplasm
Background: FGD1 gene mutations result in faciogenital dysplasia (FGDY, Aarskog-Scott syndrome), an X-linked developmental disorder that adversely affects the formation of multiple skeletal structures. FGD1 maps to human chromosome Xp11.21 and shares a high degree of sequence identity with the FGD2 (6p21.2) and the FGD3 (9q22.31) proteins. FGD1 encodes a guanine nucleotide exchange factor that specifically activates the Rho GTPase Cdc42. FGD2 is present in several diverse tissues during embryogenesis, suggesting a role in embryonic development. FGD3 stimulates fibroblasts to form filopodia, which are Actin microspikes formed upon the stimulation of Cdc42. All FGD family members contain equivalent signaling domains and a conserved structural organization, which strongly suggests that these signaling domains form a canonical core structure for members of the FGD family of RhoGEF proteins. These proteins control essential signals required during embryonic development.		

— VALIDATION IMAGES —

Sample: 293T Cell (Human) Lysate at 40 ug
 Primary: Anti-FGD3 (bs-16079R) at 1/300 dilution
 Secondary: IRDye800CW Goat Anti-Rabbit IgG at 1/20000 dilution
 Predicted band size: 79 kD
 Observed band size: 75 kD



Paraformaldehyde-fixed, paraffin embedded Mouse Stomach; Antigen retrieval by boiling in sodium citrate buffer (pH6.0) for 15 min; Antibody incubation with FGD3 Polyclonal Antibody, Unconjugated (bs-16079R) at 1:200 overnight at 4°C, followed by conjugation to the SP Kit (Rabbit, SP-0023) and DAB (C-0010) staining.