

BDP Rabbit pAb

Catalog Number: bs-12580R

Target Protein: BDP

Concentration: 1mg/ml

Form: Liquid

Host: Rabbit

Clonality: Polyclonal

Isotype: IgG

Applications: WB (1:500-2000)

Reactivity: Human (predicted:Mouse, Rat, Rabbit, Dog, Horse)

Predicted MW: 61 kDa

Entrez Gene: 10620

Source: KLH conjugated synthetic peptide derived from human BDP/ARID3B: 251-350/561.

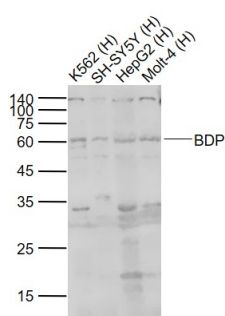
Purification: affinity purified by Protein A

Storage: 0.01M TBS (pH7.4) with 1% BSA, 0.02% Proclin300 and 50% Glycerol.

Shipped at 4°C. Store at -20°C for one year. Avoid repeated freeze/thaw cycles.

Background: ARID3B represents a member of a unique family of DNA-binding proteins that have roles in cell lineage gene regulation, cell cycle control, embryonic patterning and transcriptional regulation. ARID3B localizes to the nucleus and contains an AT-rich interactive domain (ARID) which has DNA-binding capabilities. Functioning as a transcription factor, ARID3B associates in a heterodimer with the related protein ARID3A and is believed to play an important role in neural crest survival during embryogenesis. In addition, ARID3B may participate in malignant transformation and neuroblastoma growth, suggesting a possible use of ARID3B as a tumor marker for neuroblastoma.

VALIDATION IMAGES



Sample: Lane 1: K562 (Human) Cell Lysate at 30 ug Lane 2: SH-SY5Y (Human) Cell Lysate at 30 ug Lane 3: HepG2 (Human) Cell Lysate at 30 ug Lane 4: Molt-4 (Human) Cell Lysate at 30 ug Primary: Anti-BDP (bs-12580R) at 1/1000 dilution Secondary: IRDye800CW Goat Anti-Rabbit IgG at 1/20000 dilution Predicted band size: 61 kD Observed band size: 61 kD