

bsm-52640R**[Primary Antibody]****TAPA1/CD81 Recombinant Rabbit mAb****Bioss**
ANTIBODIES

www.bioss.com.cn

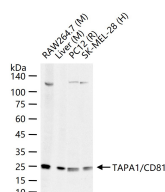
sales@bioss.com.cn

techsupport@bioss.com.cn

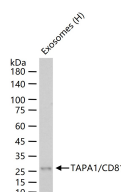
400-901-9800

DATASHEET**Host:** Rabbit**Isotype:** IgG**Clonality:** Recombinant**CloneNo.:** 4B4**GeneID:** 975**SWISS:** P60033**Target:** TAPA1/CD81**Immunogen:** A synthesized peptide derived from human CD81: 150-200.**Purification:** affinity purified by Protein A**Concentration:** 1mg/ml**Storage:** 0.01M TBS (pH7.4) with 1% BSA, 0.02% Proclin300 and 50% Glycerol.

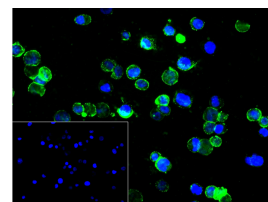
Store at -20°C for one year. Avoid repeated freeze/thaw cycles. The lyophilized antibody is stable at room temperature for at least one month and for greater than a year when kept at -20°C. When reconstituted in sterile pH 7.4 0.01M PBS or diluent of antibody the antibody is stable for at least two weeks at 2-4°C.

Background: The protein encoded by this gene is a member of the transmembrane 4 superfamily, also known as the tetraspanin family. Most of these members are cell-surface proteins that are characterized by the presence of four hydrophobic domains. The proteins mediate signal transduction events that play a role in the regulation of cell development, activation, growth and motility. This encoded protein is a cell surface glycoprotein that is known to complex with integrins. This protein appears to promote muscle cell fusion and support myotube maintenance. Also it may be involved in signal transduction. This gene is localized in the tumor-suppressor gene region and thus it is a candidate gene for malignancies. [provided by RefSeq, Jul 2008]**Applications:** WB (1:500-2000)**Flow-Cyt** (1ug/Test)**ICC/IF** (1:50-200)**Reactivity:** Human, Mouse, Rat**Predicted MW.:** 20 kDa**Subcellular Location:** Cell membrane**VALIDATION IMAGES**

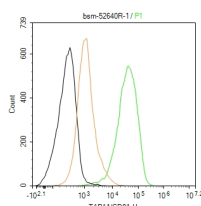
25 ug total protein per lane of various lysates (see on figure) probed with TAPA1/CD81 monoclonal antibody, unconjugated (bsm-52640R) at 1:1000 dilution and 4°C overnight incubation. Followed by conjugated secondary antibody incubation at r.t. for 60 min.



25 ug total protein per lane of various lysates (see on figure) probed with TAPA1/CD81 monoclonal antibody, unconjugated (bsm-52640R) at 1:1000 dilution and 4°C overnight incubation. Followed by conjugated secondary antibody incubation at r.t. for 60 min.



4% Paraformaldehyde-fixed THP-1 (H) cell; Antibody incubation with (TAPA1/CD81) monoclonal Antibody, unconjugated (bsm-52640R) 1:100, 90 min at 37°C; followed by conjugated Goat Anti-Rabbit IgG antibody (green, bs-60295G-BF488) at 37°C for 90 min, DAPI (blue, C02-04002) was used to stain the cell nuclei. PBS instead of the primary antibody was used as the blank control.



The THP-1 (H) cells were incubated in 5%BSA to block non-specific protein-protein interactions (30 min at r.t.) , followed by secondary antibody

Important Note: This product as supplied is intended for research use only, not for use in human, therapeutic or diagnostic applications.

incubation for 40 min at room temperature.
Primary Antibody (green): Rabbit Anti-TAPA1/CD81 antibody (bsm-52640R): 1 $\mu\text{g}/10^6$ cells; Isotype Control (orange): Rabbit IgG (bs-0295P). Blank control (black): PBS.
Acquisition of 20,000 events was performed.