

## Amyloid Precursor Protein Rabbit pAb

Catalog Number: bs-0112R

Target Protein: Amyloid Precursor Protein

Concentration: 1mg/ml

Form: Liquid

Host: Rabbit

Clonality: Polyclonal

Isotype: IgG

Applications: IHC-P (1:100-500), IHC-F (1:100-500), IF (1:100-500), ICC/IF (1:100)

Reactivity: Human, Rat (predicted: Mouse, Rabbit, Pig, Sheep, Cow, Chicken, Dog, Horse)

Predicted MW: 72-83 kDa

Entrez Gene: 351

Swiss Prot: P05067

Source: KLH conjugated synthetic peptide derived from of human APP: 381-480/770.

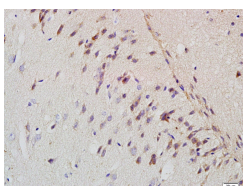
Purification: affinity purified by Protein A

Storage: 0.01M TBS (pH7.4) with 1% BSA, 0.02% Proclin300 and 50% Glycerol.

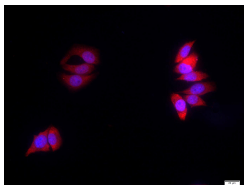
Shipped at 4°C. Store at -20°C for one year. Avoid repeated freeze/thaw cycles.

**Background:** The cerebral and vascular plaques associated with Alzheimer's disease are mainly composed of Amyloid beta peptides. beta Amyloid is derived from cleavage of the Amyloid precursor protein and varies in length from 39 to 43 amino acids. beta Amyloid [1-40], beta Amyloid [1-42], and beta Amyloid [1-43] peptides result from cleavage of Amyloid precursor protein after residues 40, 42, and 43, respectively. The cleavage takes place by gamma-secretase during the last Amyloid precursor protein processing step. beta Amyloid [1-40], beta Amyloid [1-42], and beta Amyloid [1-43] peptides are major constituents of the plaques and tangles that occur in Alzheimer's disease. beta Amyloid antibodies and peptides have been developed as tools for elucidating the biology of Alzheimer's disease.

### VALIDATION IMAGES



Tissue/cell: rat brain tissue; 4% Paraformaldehyde-fixed and paraffin-embedded; Antigen retrieval: citrate buffer ( 0.01M, pH 6.0 ), Boiling bathing for 15min; Block endogenous peroxidase by 3% Hydrogen peroxide for 30min; Blocking buffer (normal goat serum,C-0005) at 37°C for 20 min; Incubation: Anti-Amyloid Precursor Protein Polyclonal Antibody, Unconjugated(bs-0112R) 1:200, overnight at 4°C, followed by conjugation to the secondary antibody(SP-0023) and DAB(C-0010) staining



Tissue/cell: MCF7 cell; 4% Paraformaldehyde-fixed; Triton X-100 at room temperature for 20 min; Blocking buffer (normal goat serum, C-0005) at 37°C for 20 min; Antibody incubation with (Amyloid Precursor Protein) polyclonal Antibody, Unconjugated (bs-0112R) 1:100, 90 minutes at 37°C; followed by a FITC conjugated Goat Anti-Rabbit IgG antibody at 37°C for 90 minutes, DAPI (blue, C02-04002) was used to stain the cell nuclei.

## PRODUCT SPECIFIC PUBLICATIONS

---

[IF=3.23] Potter AS, Potter SS (2015) Molecular Anatomy of Palate Development. PLoS ONE 10(7): e0132662. doi:10.1371 IHC ;  
="Mouse" . 26168040

[IF=3.457] G V et al. Therapeutic impact of rHuEPO on abnormal platelet APP, BACE 1, presenilin 1, ADAM 10 and A $\beta$  expressions in chronic kidney disease patients with cognitive dysfunction like Alzheimer's disease: A pilot study. Biomed Pharmacother. 2018 Aug;104:211-222. WB ; Human . 29775888

[IF=3.166] Zhou CC et al. Lead exposure induces Alzheimers's disease (AD)-like pathology and disturbs cholesterol metabolism in the young rat brain. Toxicol Lett. 2018 Oct 15;296:173-183. WB,IHC ; Rat . 29908845

[IF=3.307] Wang C et al. One-step synthesized flower-like materials used for sensitively detecting amyloid precursor protein. Anal Bioanal Chem. 2018 Oct;410(26):6901-6909. Other ; human . 30083908

[IF=2.22] Wang, Chengke, and Zhenxin Wang. "Studying the relationship between cell cycle and Alzheimer' s disease by gold nanoparticle probes." Analytical Biochemistry (2015). ELISA ; ="Human" . 26299647