

bs-11754R**[Primary Antibody]****SCGN Rabbit pAb****Bioss**
ANTIBODIES

www.bioss.com.cn

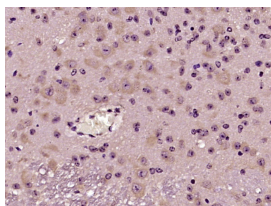
sales@bioss.com.cn

techsupport@bioss.com.cn

400-901-9800

— DATASHEET —

Host: Rabbit	Isotype: IgG	Applications: IHC-P (1:100-500) IHC-F (1:100-500) IF (1:100-500) Reactivity: Mouse (predicted: Human, Rat, Pig, Sheep, Cow, Dog, Horse) Predicted MW.: 32 kDa Subcellular Location: Cell membrane ,Cytoplasm
Clonality: Polyclonal		
GeneID: 10590	SWISS: O76038	
Target: SCGN		
Immunogen: KLH conjugated synthetic peptide derived from human Secretagodin: 221-276/276.		
Purification: affinity purified by Protein A		
Concentration: 1mg/ml		
Storage: 0.01M TBS (pH7.4) with 1% BSA, 0.02% Proclin300 and 50% Glycerol. Shipped at 4°C. Store at -20°C for one year. Avoid repeated freeze/thaw cycles.		
Background: The encoded protein is a secreted calcium-binding protein which is found in the cytoplasm. It is related to calbindin D-28K and calretinin. This protein is thought to be involved in KCL-stimulated calcium flux and cell proliferation. [provided by RefSeq, Jul 2008]		

— VALIDATION IMAGES —

Paraformaldehyde-fixed, paraffin embedded (mouse cerebellum tissue); Antigen retrieval by boiling in sodium citrate buffer (pH6.0) for 15min; Block endogenous peroxidase by 3% hydrogen peroxide for 20 minutes; Blocking buffer (normal goat serum) at 37°C for 30min; Antibody incubation with (SCGN) Polyclonal Antibody, Unconjugated (bs-11754R) at 1:400 overnight at 4°C, followed by operating according to SP Kit(Rabbit) (sp-0023) instructions and DAB staining.

— SELECTED CITATIONS —

- **[IF=5.542]** Radhika Khandelwal. et al. Extracellular secretagodin is internalized into the cells through endocytosis. 2022 Jan 09 ICC ;Mouse. 34967502
- **[IF=5.486]** Amrutha H. Chidananda. et al. Secretagodin is a Ca²⁺-dependent stress-responsive chaperone that may also play a role in aggregation-based proteinopathies. J BIOL CHEM. 2022 Jul;:102285 WB ;Rat. 35870554