
PPP2R2B/PP2A-B55 Rabbit pAb

Catalog Number: bs-11749R

Target Protein: PPP2R2B/PP2A-B55

Concentration: 1mg/ml

Form: Liquid

Host: Rabbit

Clonality: Polyclonal

Isotype: IgG

Applications: WB (1:500-2000), IHC-P (1:100-500), IHC-F (1:100-500), IF (1:100-500)

Reactivity: Mouse, Rat (predicted:Human, Rabbit, Pig, Sheep, Chicken, Dog)

Predicted MW: 52 kDa

Subcellular: Cell membrane ,Cytoplasm

Locations:

Entrez Gene: 5521

Swiss Prot: Q00005

Source: KLH conjugated synthetic peptide derived from human PPP2R2B/PP2A-B55: 51-130/443.

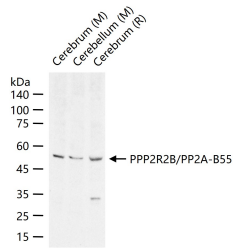
Purification: affinity purified by Protein A

Storage: 0.01M TBS (pH7.4) with 1% BSA, 0.02% Proclin300 and 50% Glycerol.

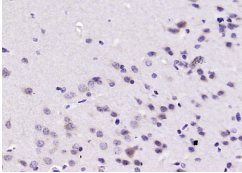
Shipped at 4°C. Store at -20°C for one year. Avoid repeated freeze/thaw cycles.

Background: In eukaryotes, the phosphorylation and dephosphorylation of proteins on serine and threonine residues is an essential means of regulating a broad range of cellular functions, including division, homeostasis and apoptosis. A group of proteins that are intimately involved in this process are the protein phosphatases. In general, the protein phosphatase (PP) holoenzyme is a trimeric complex composed of a regulatory subunit, a variable subunit and a catalytic subunit. Four major families of protein phosphatase catalytic subunits have been identified, designated PP1, PP2A, PP2B (calcineurin) and PP2C. An additional protein phosphatase catalytic subunit, PPX (also known as PP4) is a putative member of a novel PP family. The PP2A family comprises subfamily members PP2A α and PP2A β . The PP2A catalytic subunit associates with a variety of regulatory subunits. The B family of regulatory subunits (including B55, B56 and PR72/130 subfamilies) is believed to participate in substrate specificity and catalytic activity. PP2A-B55, also known as PP2A regulatory subunit subfamily B55 or PP2A-B1, is a B subfamily consisting of four B55 isoforms (Alpha, Beta, Gamma and Delta) encoded by four distinct genes.

VALIDATION IMAGES



25 ug total protein per lane of various lysates (see on figure) probed with PPP2R2B/PP2A-B55 polyclonal antibody, unconjugated (bs-11749R) at 1:1000 dilution and 4°C overnight incubation. Followed by conjugated secondary antibody incubation at r.t. for 60 min.



Paraformaldehyde-fixed, paraffin embedded (rat brain); Antigen retrieval by boiling in sodium citrate buffer (pH6.0) for 15min; Block endogenous peroxidase by 3% hydrogen peroxide for 20 minutes; Blocking buffer (normal goat serum) at 37°C for 30min; Antibody incubation with (PPP2R2B,PP2A-B55) Polyclonal Antibody, Unconjugated (bs-11749R) at 1:200 overnight at 4°C, followed by operating according to SP Kit(Rabbit) (sp-0023) instructions and DAB staining.