

bs-13109R**[Primary Antibody]****ETEA Rabbit pAb****Bioss**
ANTIBODIES

www.bioss.com.cn

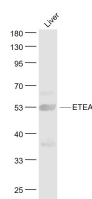
sales@bioss.com.cn

techsupport@bioss.com.cn

400-901-9800

— DATASHEET —

Host: Rabbit	Isotype: IgG	Applications: WB (1:500-2000)
Clonality: Polyclonal		Reactivity: Mouse (predicted: Human, Rat, Sheep, Chicken, Horse)
GeneID: 23197	SWISS: Q96CS3	
Target: ETEA		Predicted MW.: 53 kDa
Immunogen: KLH conjugated synthetic peptide derived from human ETEA: 81-180/445.		Subcellular Location: Cytoplasm
Purification: affinity purified by Protein A		
Concentration: 1mg/ml		
Storage: 0.01M TBS (pH7.4) with 1% BSA, 0.02% Proclin300 and 50% Glycerol. Shipped at 4°C. Store at -20°C for one year. Avoid repeated freeze/thaw cycles.		
Background: ETEA is a 445-amino acid protein associated with atopic dermatitis (AD), a chronic noncontagious relapsing inflammatory skin disease characterized by eczematous skin lesions and also referred to as eczematous dermatitis. Other atopic diseases such as hay fever, asthma and conjunctivitis often occur along with AD. ETEA shows higher expression in T cells and eosinophils of patients with AD than in T cells and eosinophils of unaffected individuals. T cells are influential in the regulation of the inflammatory process of this disease. The persistence of AD is attributed to dysregulated apoptosis in T cells, eosinophils, and keratinocytes. ETEA may be involved in the resistance to apoptosis in T cells and eosinophils of AD patients.		

— VALIDATION IMAGES —

Sample: Liver (Mouse) Lysate at 40 ug Primary:
Anti- ETEA (bs-13109R) at 1/1000 dilution
Secondary: IRDye800CW Goat Anti-Rabbit IgG at
1/20000 dilution Predicted band size: 53 kD
Observed band size: 53 kD