

**bs-25514R****[ Primary Antibody ]****GCH1 Rabbit pAb****Bioss**  
ANTIBODIES

www.bioss.com.cn

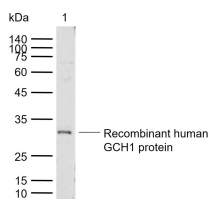
sales@bioss.com.cn

techsupport@bioss.com.cn

400-901-9800

**— DATASHEET —**

<b>Host:</b> Rabbit	<b>Isotype:</b> IgG	<b>Applications:</b> WB (1:500-2000)
<b>Clonality:</b> Polyclonal		<b>Reactivity:</b> Human (predicted: Mouse, Rat, Sheep, Cow, Chicken, Dog, Horse)
<b>GeneID:</b> 2643	<b>SWISS:</b> P30793	<b>Predicted MW.:</b> 28 kDa
<b>Target:</b> GCH1		<b>Subcellular Location:</b> Cytoplasm ,Nucleus
<b>Immunogen:</b> KLH conjugated synthetic peptide derived from human GCH1: 101-200/250.		
<b>Purification:</b> affinity purified by Protein A		
<b>Concentration:</b> 1mg/ml		
<b>Storage:</b> 0.01M TBS (pH7.4) with 1% BSA, 0.02% Proclin300 and 50% Glycerol. Shipped at 4°C. Store at -20°C for one year. Avoid repeated freeze/thaw cycles.		
<b>Background:</b> GTP cyclohydrolase I (also designated dopa-responsive dystonia) catalyzes the conversion of GTP to D-erythro-7,8-dihydroneopterin triphosphate, the first and rate-limiting step in tetrahydrobiopterin (BH4) biosynthesis. Tetrahydrobiopterin is an essential cofactor for 3 aromatic amino acid monooxygenases: phenylalanine, tyrosine, and tryptophan hydroxylases. Animals can synthesize tetrahydrobiopterin in vivo from GTP through several enzymatic reactions.		

**— VALIDATION IMAGES —**

Sample: Lane 1: Recombinant human GCH1 protein, C-His(bs-42069P) Primary: Anti-GCH1 (bs-25514R) at 1/1000 dilution Secondary: IRDye800CW Goat Anti-Rabbit IgG at 1/20000 dilution Predicted band size: 28 kDa Observed band size: 30 kDa