

bs-22471R**[Primary Antibody]****alpha Sarcoglycan Rabbit pAb****Bioss**
ANTIBODIES

www.bioss.com.cn

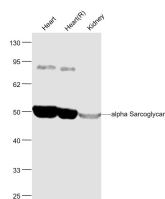
sales@bioss.com.cn

techsupport@bioss.com.cn

400-901-9800

— DATASHEET —

Host: Rabbit	Isotype: IgG	Applications: WB (1:500-2000)
Clonality: Polyclonal		Reactivity: Mouse, Rat (predicted: Human, Rabbit, Pig, Cow)
GeneID: 6442	SWISS: Q16586	Predicted MW.: 40 kDa
Target: alpha Sarcoglycan		Subcellular Location: Cell membrane ,Cytoplasm
Immunogen: KLH conjugated synthetic peptide derived from human alpha Sarcoglycan: 211-310/387. < Extracellular >		
Purification: affinity purified by Protein A		
Concentration: 1mg/ml		
Storage: 0.01M TBS (pH7.4) with 1% BSA, 0.02% Proclin300 and 50% Glycerol. Shipped at 4°C. Store at -20°C for one year. Avoid repeated freeze/thaw cycles.		
Background: Component of the sarcoglycan complex, a subcomplex of the dystrophin-glycoprotein complex which forms a link between the F-actin cytoskeleton and the extracellular matrix.		

— VALIDATION IMAGES —

Sample: Heart (Mouse) Lysate at 40 ug Heart
(Rat) Lysate at 40 ug Kidney (Mouse) Lysate at 40
ug Primary: Anti-alpha Sarcoglycan (bs-22471R)
at 1/1000 dilution Secondary: IRDye800CW Goat
Anti-Rabbit IgG at 1/20000 dilution Predicted
band size: 50 kD Observed band size: 50 kD