

bs-9985R**[Primary Antibody]****BioSS**
ANTIBODIES

www.bioss.com.cn

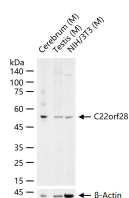
sales@bioss.com.cn

techsupport@bioss.com.cn

400-901-9800

C22orf28 Rabbit pAb**— DATASHEET —**

Host: Rabbit	Isotype: IgG	Applications: WB (1:500-2000)
Clonality: Polyclonal		Reactivity: Mouse (predicted: Human, Rat, Rabbit, Pig, Sheep, Cow, Horse)
GeneID: 51493	SWISS: Q9Y3I0	
Target: C22orf28		Predicted MW.: 55 kDa
Immunogen: KLH conjugated synthetic peptide derived from human HSPC117/C22orf28: 411-505/505.		Subcellular Location: Cytoplasm
Purification: affinity purified by Protein A		
Concentration: 1mg/ml		
Storage: 0.01M TBS (pH7.4) with 1% BSA, 0.02% Proclin300 and 50% Glycerol. Shipped at 4°C. Store at -20°C for one year. Avoid repeated freeze/thaw cycles.		
Background: HSPC117, also known as C22orf28, is a 505 amino acid protein that is encoded by a gene which maps to human chromosome 22. A highly homologous protein identified in rodents, FAAP (focal adhesion associated protein), encoded by murine D10Wsu52e gene, has been suggested to play a role in regulating cell adhesion dynamics. Chromosome 22 houses over 500 genes and is the second smallest human chromosome. Mutations in several of the genes that map to chromosome 22 are involved in the development of Phelan-McDermid syndrome, Neurofibromatosis type 2, autism and schizophrenia. Additionally, translocations between chromosomes 9 and 22 may lead to the formation of the Philadelphia Chromosome and the subsequent production of the novel fusion protein BCR-Abl, a potent cell proliferation activator found in several types of leukemias.		

— VALIDATION IMAGES —

25 ug total protein per lane of various lysates (see on figure) probed with C22orf28 polyclonal antibody, unconjugated (bs-9985R) at 1:1000 dilution and 4°C overnight incubation. Followed by conjugated secondary antibody incubation at r.t. for 60 min.