

**bs-12711R****[ Primary Antibody ]**

## Plakophilin 4 Rabbit pAb

**BioSS**  
ANTIBODIES

www.bioss.com.cn

sales@bioss.com.cn

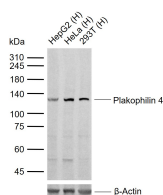
techsupport@bioss.com.cn

400-901-9800

### — DATASHEET —

<b>Host:</b> Rabbit	<b>Isotype:</b> IgG	<b>Applications:</b> WB (1:500-2000)
<b>Clonality:</b> Polyclonal		
<b>GeneID:</b> 8502	<b>SWISS:</b> Q99569	
<b>Target:</b> Plakophilin 4		
<b>Immunogen:</b> KLH conjugated synthetic peptide derived from human Plakophilin 4: 1101-1192/1192.		
<b>Purification:</b> affinity purified by Protein A		
<b>Concentration:</b> 1mg/ml		
<b>Storage:</b> 0.01M TBS (pH7.4) with 1% BSA, 0.02% Proclin300 and 50% Glycerol. Shipped at 4°C. Store at -20°C for one year. Avoid repeated freeze/thaw cycles.		
<b>Background:</b> Armadillo-like proteins are characterized by a series of armadillo repeats, first defined in the Drosophila 'armadillo' gene product, that are typically 42 to 45 amino acids in length. These proteins can be divided into subfamilies based on their number of repeats, their overall sequence similarity, and the dispersion of the repeats throughout their sequences. Members of the p120(ctn)/plakophilin subfamily of Armadillo-like proteins, including CTNND1, CTNND2, PKP1, PKP2, PKP4, and ARVCF. PKP4 may be a component of desmosomal plaque and other adhesion plaques and is thought to be involved in regulating junctional plaque organization and cadherin function. Multiple transcript variants encoding different isoforms have been found for this gene. [provided by RefSeq, Feb 2015]		
		<b>Reactivity:</b> Human (predicted: Mouse, Rat, Rabbit, Pig, Sheep, Cow, Dog, Horse)
		<b>Predicted MW.:</b> 132 kDa
		<b>Subcellular Location:</b> Cytoplasm

### — VALIDATION IMAGES —



Sample: Lane 1: Human HepG2 cell lysates Lane 2: Human HeLa cell lysates Lane 3: Human 293T cell lysates Primary: Anti-Plakophilin 4 (bs-12711R) at 1/1000 dilution Secondary: IRDye800CW Goat Anti-Rabbit IgG at 1/20000 dilution Predicted band size: 132 kDa Observed band size: 130 kDa