

bs-15592R**[Primary Antibody]****NFIL3 Rabbit pAb****BioSS**
ANTIBODIES

www.bioss.com.cn

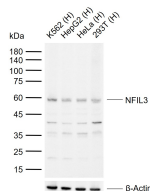
sales@bioss.com.cn

techsupport@bioss.com.cn

400-901-9800

— DATASHEET —

Host: Rabbit	Isotype: IgG	Applications: WB (1:500-2000)
Clonality: Polyclonal		Reactivity: Human (predicted: Mouse, Rat, Sheep, Cow)
GeneID: 4783	SWISS: Q16649	
Target: NFIL3		
Immunogen: KLH conjugated synthetic peptide derived from human NFIL3: 21-120/462.		Predicted MW.: 51 kDa
Purification: affinity purified by Protein A		Subcellular Location: Nucleus
Concentration: 1mg/ml		
Storage: 0.01M TBS (pH7.4) with 1% BSA, 0.02% Proclin300 and 50% Glycerol. Shipped at 4°C. Store at -20°C for one year. Avoid repeated freeze/thaw cycles.		
Background: Expression of interleukin-3 (IL3; MIM 147740) is restricted to activated T cells, natural killer (NK) cells, and mast cell lines. Transcription initiation depends on the activating capacity of specific protein factors, such as NFIL3, that bind to regulatory regions of the gene, usually upstream of the transcription start site (Zhang et al., 1995 [PubMed 7565758]).[supplied by OMIM, Feb 2009]		

— VALIDATION IMAGES —

Sample: Lane 1: Human K562 cell lysates Lane 2: Human HepG2 cell lysates Lane 3: Human HeLa cell lysates Lane 4: Human 293T cell lysates
Primary: Anti-NFIL3 (bs-15592R) at 1/1000 dilution Secondary: IRDye800CW Goat Anti-Rabbit IgG at 1/20000 dilution Predicted band size: 51 kDa Observed band size: 60 kDa