

bs-12702R**[Primary Antibody]****phospho-DNM1L (Ser616) Rabbit pAb****BioSS**
ANTIBODIES

www.bioss.com.cn

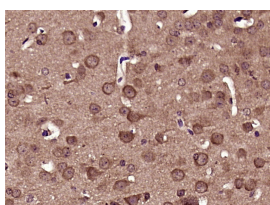
sales@bioss.com.cn

techsupport@bioss.com.cn

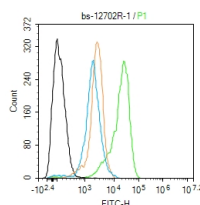
400-901-9800

— DATASHEET —

Host: Rabbit	Isotype: IgG	Applications: IHC-P (1:100-500)
Clonality: Polyclonal		IHC-F (1:100-500)
GeneID: 10059	SWISS: O00429	IF (1:100-500)
Target: DNM1L (Ser616)		Flow-Cyt (1ug/Test)
Immunogen: KLH conjugated synthesised phosphopeptide derived from human DRP1 around the phosphorylation site of Ser616: PA(p-S)PQ.		Reactivity: Human, Mouse (predicted: Rat, Pig, Dog, GuineaPig)
Purification: affinity purified by Protein A		Predicted MW.: 82 kDa
Concentration: 1mg/ml		Subcellular Location: Cytoplasm
Storage: 0.01M TBS (pH7.4) with 1% BSA, 0.02% Proclin300 and 50% Glycerol. Shipped at 4°C. Store at -20°C for one year. Avoid repeated freeze/thaw cycles.		
Background: The protein encoded by this gene is a member of the dynamin superfamily of GTPases. Members of the dynamin-related subfamily, including the <i>S. cerevisiae</i> proteins Dnm1 and Vps1, contain the N-terminal tripartite GTPase domain but do not have the pleckstrin homology or proline-rich domains. This protein establishes mitochondrial morphology through a role in distributing mitochondrial tubules throughout the cytoplasm. The gene has 3 alternatively spliced transcripts encoding different isoforms. These transcripts are alternatively polyadenylated. [provided by RefSeq, Jul 2008].		

— VALIDATION IMAGES —

Paraformaldehyde-fixed, paraffin embedded (Mouse brain); Antigen retrieval by boiling in sodium citrate buffer (pH6.0) for 15min; Block endogenous peroxidase by 3% hydrogen peroxide for 20 minutes; Blocking buffer (normal goat serum) at 37°C for 30min; Antibody incubation with (phospho-DRP1 (Ser616)) Polyclonal Antibody, Unconjugated (bs-12702R) at 1:400 overnight at 4°C, followed by operating according to SP Kit(Rabbit) (sp-0023) instructions and DAB staining.



Blank control:U2-OS. Primary Antibody (green line): Rabbit Anti-phospho-DNM1L (Ser616) antibody (bs-12702R) Dilution: 1ug/Test; Secondary Antibody : Goat anti-rabbit IgG-FITC Dilution: 0.5ug/Test. Protocol The cells were fixed with 4% PFA (10min at room temperature) and then permeabilized with 90% ice-cold methanol for 20 min at -20°C. The cells were then incubated in 5%BSA to block non-specific protein-protein interactions for 30 min at room temperature. Cells stained with Primary Antibody for 30 min at room temperature. The secondary antibody used for 40 min at room temperature. Acquisition of 20,000 events was performed.

— SELECTED CITATIONS —

- **[IF=7.1]** Shuang-Feng Xu. et al. Astrocytic lactoferrin deficiency augments MPTP-induced dopaminergic neuron loss by disturbing glutamate/calcium and ER-mitochondria signaling. FREE RADICAL BIO MED. 2024 Nov;225:374 WB ;Mouse. 39406276

Important Note: This product as supplied is intended for research use only, not for use in human, therapeutic or diagnostic applications.

- **[IF=6]** Zhang Shuai. et al. Dexmedetomidine ameliorates acute kidney injury by regulating mitochondrial dynamics via the α 2-AR/SIRT1/PGC-1 α pathway activation in rats. MOL MED. 2024 Dec;30(1):1-23 IF, WB ;Rat. 39455916
- **[IF=4.4]** Jia-Ming Bai. et al. The active metabolite of Epimedii Folium promotes hippocampal neurogenesis in APP/PS1 mice by alleviating mitochondrial dysfunction. FRONT PHARMACOL. 2025 Apr;16: WB ;Mouse. 40351431
- **[IF=3.329]** Guo J et al. Drp1 mediates high glucose-induced mitochondrial dysfunction and epithelial-mesenchymal transition in endometrial cancer cells. Exp Cell Res. 2020 Feb 1:111880. IHC, WB ;Human. 32017930